

## Product datasheet for **TA600522**

### SSB Mouse Monoclonal Capture Antibody [Clone ID: OTI1E11]

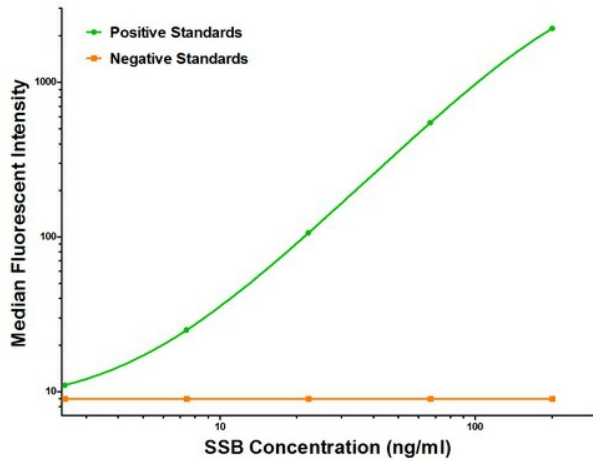
#### Product data:

Product Type:	Primary Antibodies
Clone Name:	OTI1E11
Applications:	ELISA
Recommended Dilution:	ELISA 1:100-1:1000
Reactivity:	Human
Host:	Mouse
Isotype:	IgG1
Clonality:	Monoclonal
Immunogen:	Full length human recombinant protein of human SSB (NM_003142) produced in HEK293T cell.
Formulation:	Stored in PBS (pH 7.4) containing 0.05% sodium azide and up to 5% trehalose
Concentration:	0.5 mg/ml
Conjugation:	Unconjugated
Storage:	Store at -20°C. Avoid repeat freeze/thaw cycles.
Stability:	Stable for 12 months from date of receipt.
Gene Name:	small RNA binding exonuclease protection factor La
Database Link:	<a href="#">NP_003133</a> <a href="#">Entrez Gene 6741 Human P05455</a>
Synonyms:	La; La/SSB; LARP3
Matched ELISA Pair:	TA700522
Protein Families:	Stem cell - Pluripotency, Transcription Factors
Protein Pathways:	Systemic lupus erythematosus



[View online »](#)

## Product images:



SSB Luminex with 1E11 Capture (TA600522) and 9D6 Detection ([TA700522]) Antibodies. Substrate used: Recombinant Human SSB (TP305013)