

## Product datasheet for **TA600521**

### **BubR1 (BUB1B) Mouse Monoclonal Capture Antibody [Clone ID: OTI3C7]**

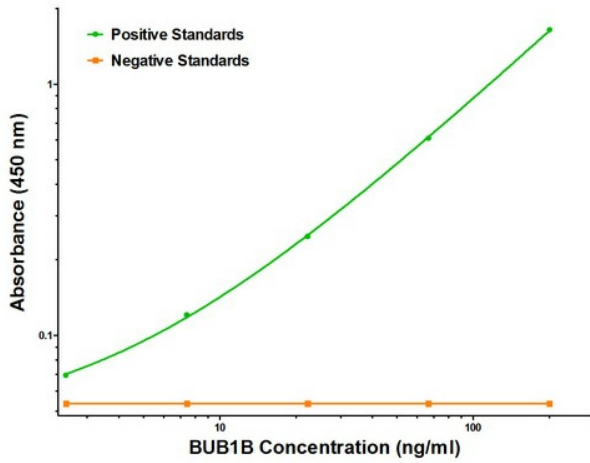
#### **Product data:**

Product Type:	Primary Antibodies
Clone Name:	OTI3C7
Applications:	ELISA
Recommended Dilution:	ELISA 1:100-1:1000
Reactivity:	Human
Host:	Mouse
Isotype:	IgG1
Clonality:	Monoclonal
Immunogen:	Full length human recombinant protein of human BUB1B (NM_001211) produced in HEK293T cell.
Formulation:	Stored in PBS (pH 7.4) containing 0.05% sodium azide and up to 5% trehalose
Concentration:	0.5 mg/ml
Conjugation:	Unconjugated
Storage:	Store at -20°C. Avoid repeat freeze/thaw cycles.
Stability:	Stable for 12 months from date of receipt.
Gene Name:	BUB1 mitotic checkpoint serine/threonine kinase B
Database Link:	<a href="#">NP_001202</a> <a href="#">Entrez Gene 701 Human</a> <a href="#">O60566</a>
Synonyms:	Bub1A; BUB1beta; BUBR1; hBUBR1; MAD3L; MVA1; SSK1
Matched ELISA Pair:	TA700521, TA700531
Protein Families:	Druggable Genome, Protein Kinase, Stem cell - Pluripotency
Protein Pathways:	Cell cycle

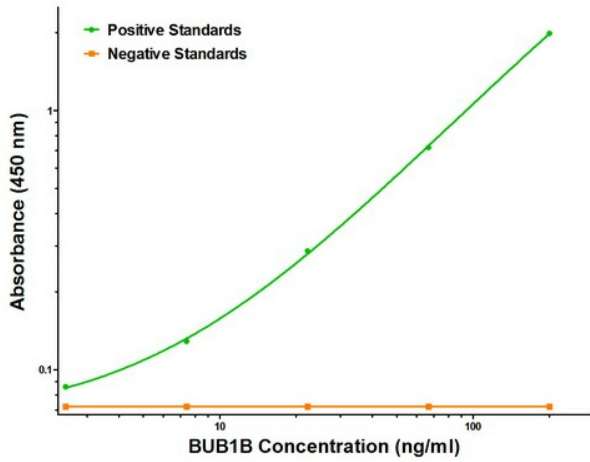


[View online »](#)

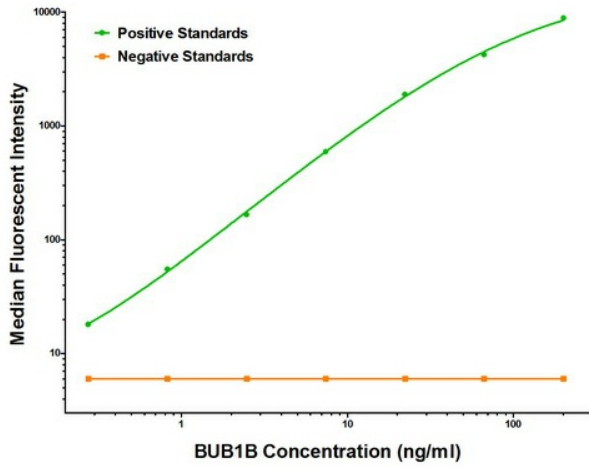
Product images:



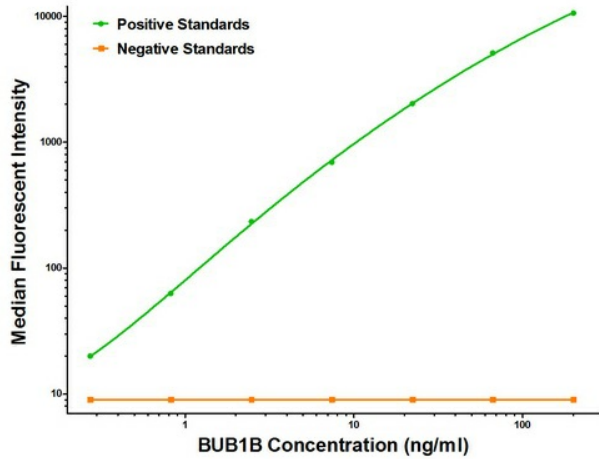
BUB1B ELISA with 3C7 Capture (TA600521) and 5D9 Detection ([TA700521]) Antibodies. Substrate used: Recombinant Human BUB1B ([TP305844])



BUB1B ELISA with 3C7 Capture (TA600521) and 6E5 Detection ([TA700531]) Antibodies. Substrate used: Recombinant Human BUB1B ([TP305844])



BUB1B Luminex with 3C7 Capture (TA600521) and 5D9 Detection ([TA700521]) Antibodies. Substrate used: Recombinant Human BUB1B ([TP305844])



BUB1B Luminex with 3C7 Capture (TA600521) and 6E5 Detection ([TA700531]) Antibodies. Substrate used: Recombinant Human BUB1B ([TP305844])