

Product datasheet for **TA600520**

TUBA8 Mouse Monoclonal Capture Antibody [Clone ID: OTI3E10]

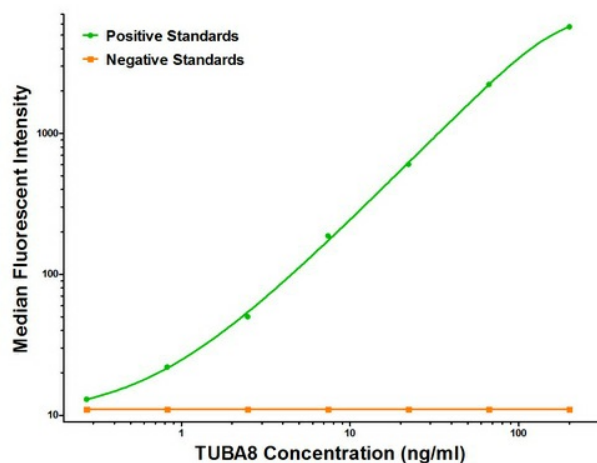
Product data:

Product Type:	Primary Antibodies
Clone Name:	OTI3E10
Applications:	ELISA
Recommended Dilution:	ELISA 1:100-1:1000
Reactivity:	Human, Mouse, Rat
Host:	Mouse
Isotype:	IgG1
Clonality:	Monoclonal
Immunogen:	Full length human recombinant protein of human TUBA8 (NM_018943) produced in HEK293T cell.
Formulation:	Stored in PBS (pH 7.4) containing 0.05% sodium azide and up to 5% trehalose
Concentration:	0.5 mg/ml
Conjugation:	Unconjugated
Storage:	Store at -20°C. Avoid repeat freeze/thaw cycles.
Stability:	Stable for 12 months from date of receipt.
Gene Name:	tubulin alpha 8
Database Link:	NP_061816 Entrez Gene 500377 Rat Entrez Gene 51807 Human Q9NY65
Synonyms:	TUBAL2
Matched ELISA Pair:	TA700530
Protein Families:	Druggable Genome
Protein Pathways:	Gap junction, Pathogenic Escherichia coli infection



[View online »](#)

Product images:



TUBA8 Luminex with 3E10 Capture (TA600520) and 2G6 Detection ([TA700530]) Antibodies. Substrate used: Recombinant Human TUBA8 ([TP311175])