

## Product datasheet for **TA600519**

### TUBA8 Mouse Monoclonal Capture Antibody [Clone ID: OTI2G6]

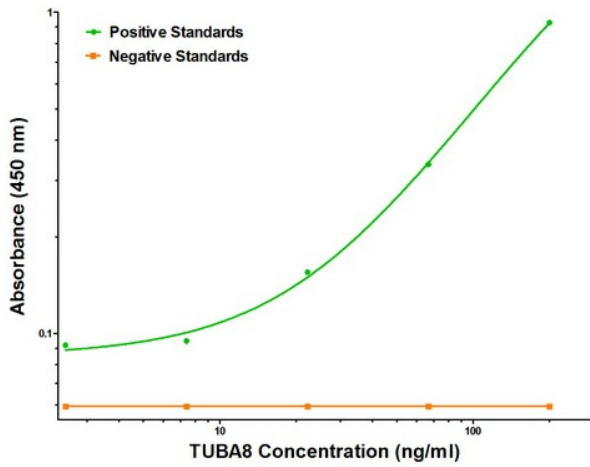
#### Product data:

Product Type:	Primary Antibodies
Clone Name:	OTI2G6
Applications:	ELISA
Recommended Dilution:	ELISA 1:100-1:1000
Reactivity:	Human, Mouse, Rat
Host:	Mouse
Isotype:	IgG1
Clonality:	Monoclonal
Immunogen:	Full length human recombinant protein of human TUBA8 (NM_018943) produced in HEK293T cell.
Formulation:	Stored in PBS (pH 7.4) containing 0.05% sodium azide and up to 5% trehalose
Concentration:	0.5 mg/ml
Conjugation:	Unconjugated
Storage:	Store at -20°C. Avoid repeat freeze/thaw cycles.
Stability:	Stable for 12 months from date of receipt.
Gene Name:	tubulin alpha 8
Database Link:	<a href="#">NP_061816</a> <a href="#">Entrez Gene 500377 Rat</a> <a href="#">Entrez Gene 51807 Human</a> <a href="#">Q9NY65</a>
Synonyms:	TUBAL2
Matched ELISA Pair:	TA700520, TA700519, TA700529
Protein Families:	Druggable Genome
Protein Pathways:	Gap junction, Pathogenic Escherichia coli infection

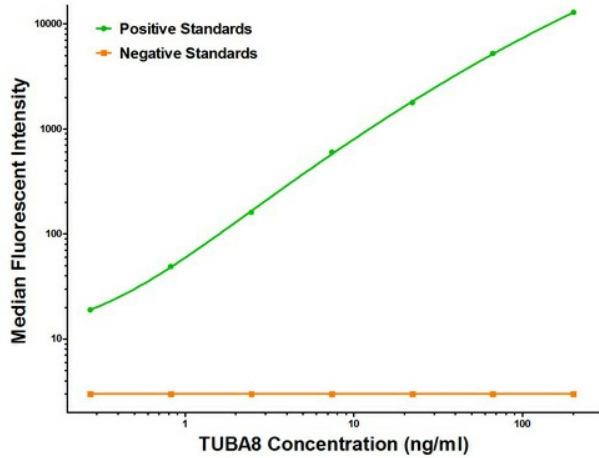


[View online »](#)

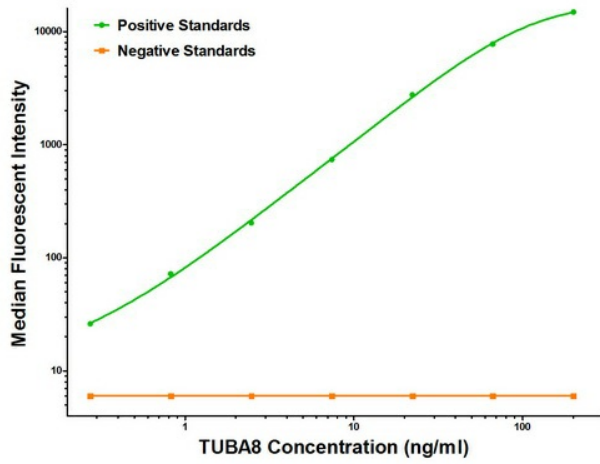
Product images:



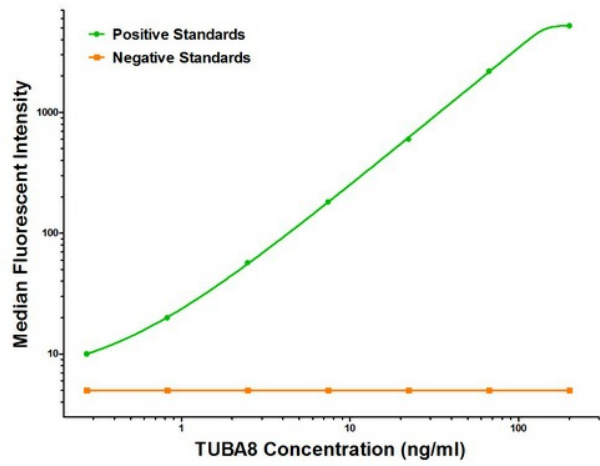
TUBA8 ELISA with 2G6 Capture (TA600519) and 3E10 Detection ([TA700520]) Antibodies. Substrate used: Recombinant Human TUBA8 ([TP311175])



TUBA8 Luminex with 2G6 Capture (TA600519) and 2E9 Detection ([TA700519]) Antibodies. Substrate used: Recombinant Human TUBA8 ([TP311175])



TUBA8 Luminex with 2G6 Capture (TA600519) and 3E10 Detection ([TA700520]) Antibodies. Substrate used: Recombinant Human TUBA8 ([TP311175])



TUBA8 Luminex with 2G6 Capture (TA600519) and 3G2 Detection ([TA700529]) Antibodies. Substrate used: Recombinant Human TUBA8 ([TP311175])