

Product datasheet for **TA600511**

BTK Mouse Monoclonal Capture Antibody [Clone ID: OTI10E10]

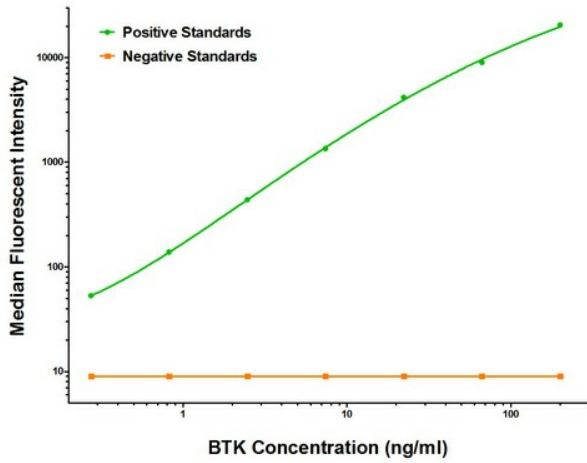
Product data:

Product Type:	Primary Antibodies
Clone Name:	OTI10E10
Applications:	ELISA
Recommended Dilution:	ELISA 1:100-1:1000
Reactivity:	Human, Mouse, Rat
Host:	Mouse
Isotype:	IgG1
Clonality:	Monoclonal
Immunogen:	Full length human recombinant protein of human BTK (NM_000061) produced in HEK293T cell.
Formulation:	Stored in PBS (pH 7.4) containing 0.05% sodium azide and up to 5% trehalose
Concentration:	0.5 mg/ml
Conjugation:	Unconjugated
Storage:	Store at -20°C. Avoid repeat freeze/thaw cycles.
Stability:	Stable for 12 months from date of receipt.
Gene Name:	Bruton tyrosine kinase
Database Link:	NP_000052 Entrez Gene 12229 MouseEntrez Gene 367901 RatEntrez Gene 695 Human Q06187
Synonyms:	AGMX1; AT; ATK; BPK; IMD1; PSCTK1; XLA
Matched ELISA Pair:	TA700511, TA700512
Protein Families:	Druggable Genome, Protein Kinase
Protein Pathways:	B cell receptor signaling pathway, Fc epsilon RI signaling pathway, Primary immunodeficiency

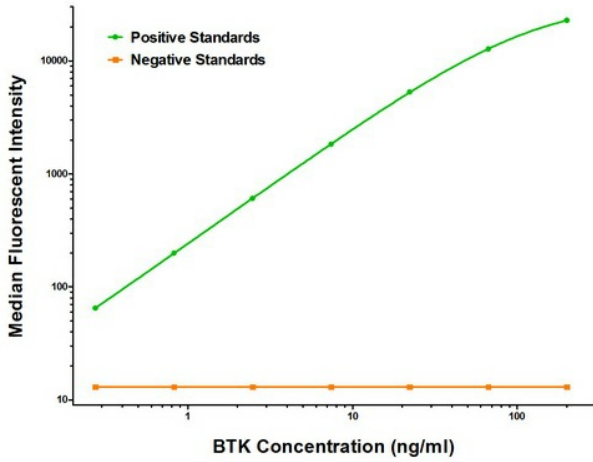


[View online »](#)

Product images:



BTK Luminex with 10E10 Capture (TA600511) and 6H9 Detection ([TA700511]) Antibodies. Substrate used: Recombinant Human BTK ([TP311582])



BTK Luminex with 10E10 Capture (TA600511) and 12H4 Detection ([TA700512]) Antibodies. Substrate used: Recombinant Human BTK ([TP311582])