

Product datasheet for **TA600505**

CD20 (MS4A1) Mouse Monoclonal Capture Antibody [Clone ID: OTI2D3]

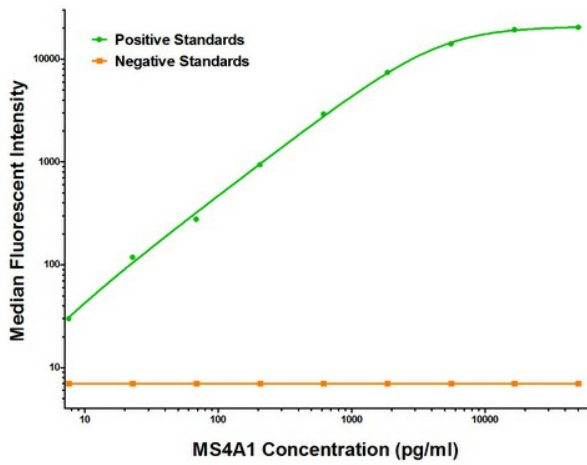
Product data:

Product Type:	Primary Antibodies
Clone Name:	OTI2D3
Applications:	ELISA
Recommended Dilution:	ELISA 1:100-1:1000
Reactivity:	Human
Host:	Mouse
Isotype:	IgG1
Clonality:	Monoclonal
Immunogen:	Full length human recombinant protein of human MS4A1 (NM_021950) produced in HEK293T cell.
Formulation:	Stored in PBS (pH 7.4) containing 0.05% sodium azide and up to 5% trehalose
Concentration:	0.5 mg/ml
Conjugation:	Unconjugated
Storage:	Store at -20°C. Avoid repeat freeze/thaw cycles.
Stability:	Stable for 12 months from date of receipt.
Gene Name:	membrane spanning 4-domains A1
Database Link:	NP_068769 Entrez Gene 931 Human P11836
Synonyms:	B1; Bp35; CD20; CVID5; FMC7; LEU-16; MS4A2; S7
Matched ELISA Pair:	TA700505, TA700506
Protein Families:	Druggable Genome, Transmembrane
Protein Pathways:	Hematopoietic cell lineage

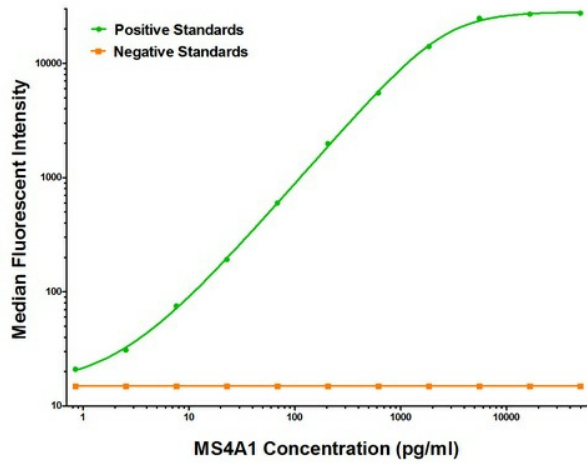


[View online »](#)

Product images:



MS4A1 Luminex with 2D3 Capture (TA600505) and 4A4 Detection ([TA700505]) Antibodies. Substrate used: Recombinant Human MS4A1 ([TP301242])



MS4A1 Luminex with 2D3 Capture (TA600505) and GAT-POLY Detection ([TA700506]) Antibodies. Substrate used: Recombinant Human MS4A1 ([TP301242])