

Product datasheet for **TA600498**

Cytokeratin 19 (KRT19) Mouse Monoclonal Capture Antibody [Clone ID: OTI5D1]

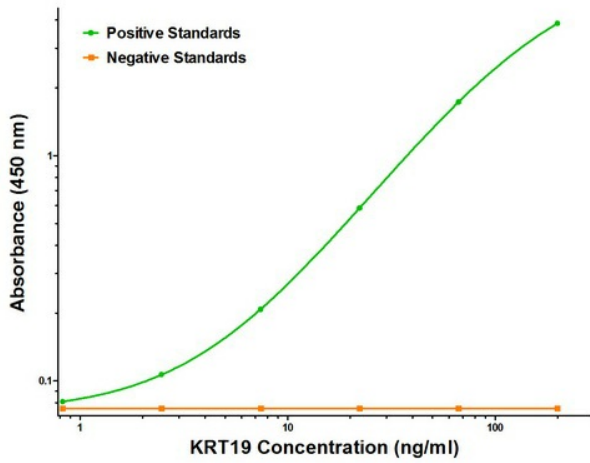
Product data:

Product Type:	Primary Antibodies
Clone Name:	OTI5D1
Applications:	ELISA, LMNX
Recommended Dilution:	1:100 - 1:1000
Reactivity:	Human
Host:	Mouse
Isotype:	IgG1
Clonality:	Monoclonal
Immunogen:	Full length human recombinant protein of human KRT19 (NM_002276) produced in HEK293T cell.
Formulation:	Stored in PBS (pH 7.4) containing 0.05% sodium azide and up to 5% trehalose
Concentration:	0.5 mg/ml
Conjugation:	Unconjugated
Storage:	Store at -20°C. Avoid repeat freeze/thaw cycles.
Stability:	Stable for 12 months from date of receipt.
Gene Name:	keratin 19
Database Link:	NP_002267 Entrez Gene 3880 Human P08727
Synonyms:	CK19; K1CS; K19
Matched ELISA Pair:	TA700050

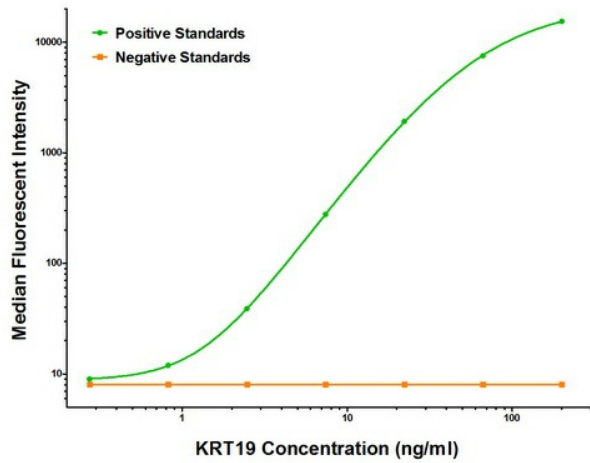


[View online »](#)

Product images:



KRT19 ELISA with 5D1 Capture (TA600498) and AT-1B12 Detection ([TA700050]) Antibodies. Substrate used: Recombinant Human KRT19 ([TP309707])



KRT19 Luminex ELISA with 5D1 Capture (TA600498) and AT-1B12 Detection ([TA700050]) Antibodies. Substrate used: Recombinant Human KRT19 ([TP309707])