

## Product datasheet for **TA600497**

### c-Myc (MYC) Mouse Monoclonal Capture Antibody [Clone ID: OTI1A6]

#### Product data:

Product Type:	Primary Antibodies
Clone Name:	OTI1A6
Applications:	ELISA, LMNX
Recommended Dilution:	1:100 - 1:1000
Reactivity:	Human, Mouse, Rat
Host:	Mouse
Isotype:	IgG1
Clonality:	Monoclonal
Immunogen:	Full length human recombinant protein of human MYC (NM_002467) produced in HEK293T cell.
Formulation:	Stored in PBS (pH 7.4) containing 0.05% sodium azide and up to 5% trehalose
Concentration:	0.5 mg/ml
Conjugation:	Unconjugated
Storage:	Store at -20°C. Avoid repeat freeze/thaw cycles.
Stability:	Stable for 12 months from date of receipt.
Gene Name:	MYC proto-oncogene, bHLH transcription factor
Database Link:	<a href="#">NP_002458</a> <a href="#">Entrez Gene 17869 Mouse</a> <a href="#">Entrez Gene 24577 Rat</a> <a href="#">Entrez Gene 4609 Human</a> <a href="#">P01106</a>
Synonyms:	bHLHe39; c-Myc; MRTL; MYCC
Matched ELISA Pair:	TA700497
Protein Families:	Druggable Genome, Embryonic stem cells, Induced pluripotent stem cells, Stem cell - Pluripotency, Stem cell relevant signaling - JAK/STAT signaling pathway, Stem cell relevant signaling - TGFb/BMP signaling pathway, Stem cell relevant signaling - Wnt Signaling pathway, Transcription Factors

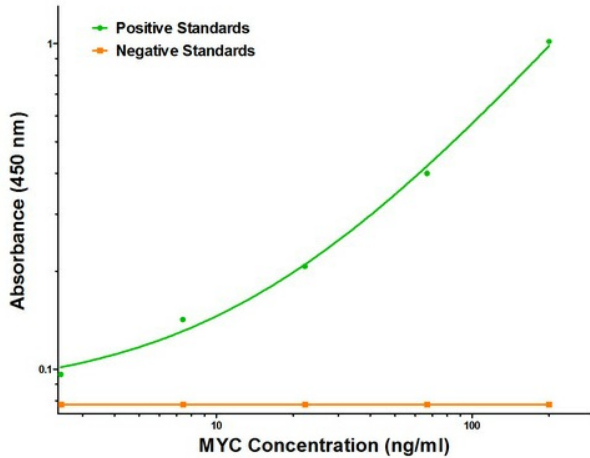


[View online »](#)

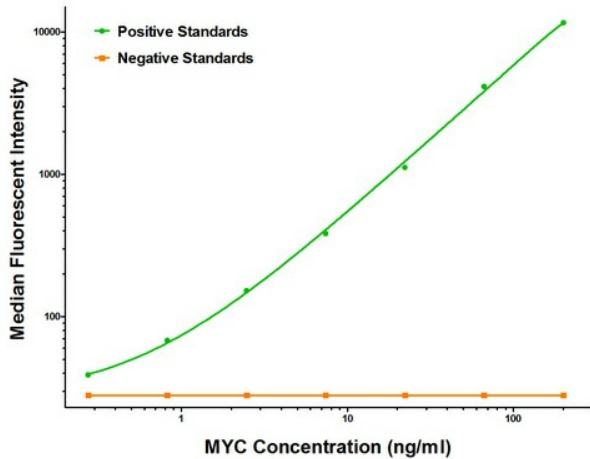
**Protein Pathways:**

Acute myeloid leukemia, Bladder cancer, Cell cycle, Chronic myeloid leukemia, Colorectal cancer, Endometrial cancer, ErbB signaling pathway, Jak-STAT signaling pathway, MAPK signaling pathway, Pathways in cancer, Small cell lung cancer, TGF-beta signaling pathway, Thyroid cancer, Wnt signaling pathway

**Product images:**



MYC ELISA with 1A6 Capture (TA600497) and 3F2 Detection ([TA700497]) Antibodies. Substrate used: Recombinant Human MYC ([TP301611])



MYC Luminex ELISA with 1A6 Capture (TA600497) and 3F2 Detection ([TA700497]) Antibodies. Substrate used: Recombinant Human MYC ([TP301611])