

Product datasheet for **TA600495**

SERPINB3 Mouse Monoclonal Capture Antibody [Clone ID: OTI1A12]

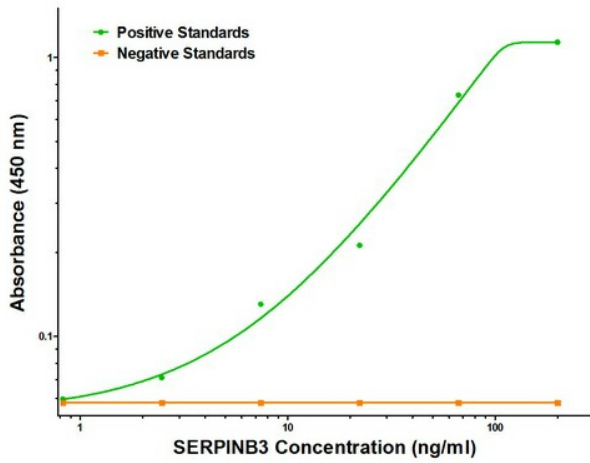
Product data:

Product Type:	Primary Antibodies
Clone Name:	OTI1A12
Applications:	ELISA, LMNX
Recommended Dilution:	1:100 - 1:1000
Reactivity:	Human
Host:	Mouse
Isotype:	IgG1
Clonality:	Monoclonal
Immunogen:	Full length human recombinant protein of human SERPINB3 (NM_006919) produced in HEK293T cell.
Formulation:	Stored in PBS (pH 7.4) containing 0.05% sodium azide and up to 5% trehalose
Concentration:	0.5 mg/ml
Conjugation:	Unconjugated
Storage:	Store at -20°C. Avoid repeat freeze/thaw cycles.
Stability:	Stable for 12 months from date of receipt.
Gene Name:	serpin family B member 3
Database Link:	NP_008850 Entrez Gene 6317 Human P29508
Synonyms:	HsT1196; SCC; SCCA-1; SCCA-PD; SCCA1; SSCA1; T4-A
Matched ELISA Pair:	TA700495
Protein Families:	Druggable Genome, Secreted Protein

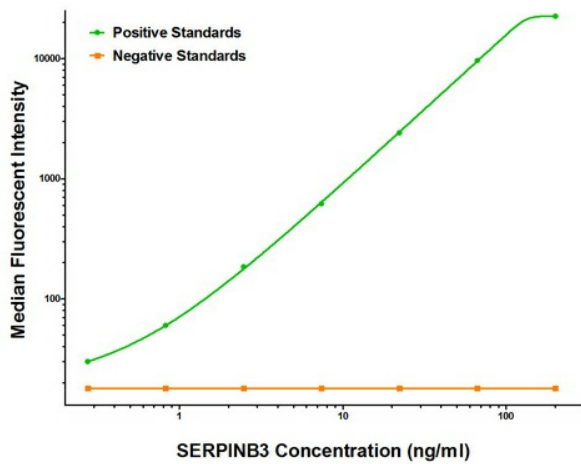


[View online »](#)

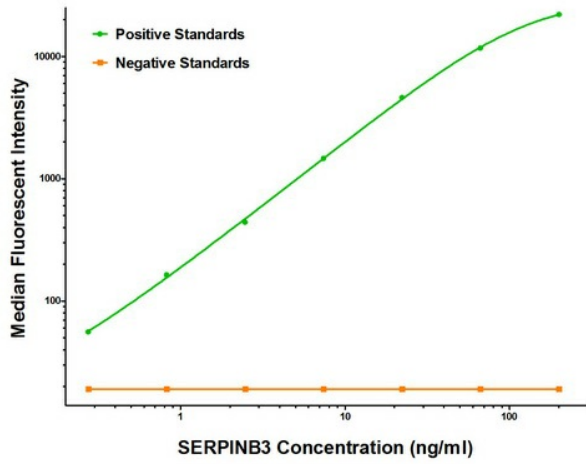
Product images:



SERPINB3 ELISA with 1A12 Capture (TA600495) and 1F10 Detection ([TA700495]) Antibodies. Substrate used: Recombinant Human SERPINB3 ([TP302683])



SERPINB3 Luminex ELISA with 1A12 Capture (TA600495) and 1C12 Detection ([TA700501]) Antibodies. Substrate used: Recombinant Human SERPINB3 ([TP302683])



SERPINB3 Luminex ELISA with 1A12 Capture (TA600495) and 1F10 Detection ([TA700495]) Antibodies. Substrate used: Recombinant Human SERPINB3 ([TP302683])