

Product datasheet for **TA600493**

SERPINB3 Capture Mouse Monoclonal Antibody [Clone ID: OTI1G9]

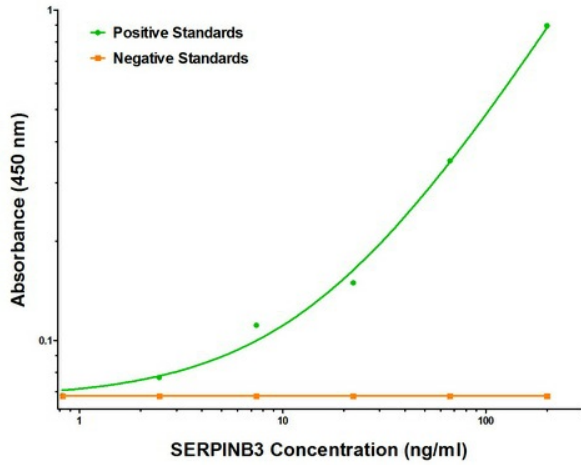
Product data:

Product Type:	Primary Antibodies
Clone Name:	OTI1G9
Applications:	ELISA, LMNX
Recommend Dilution:	1:100 - 1:1000
Reactivity:	Human
Host:	Mouse
Isotype:	IgG1
Clonality:	Monoclonal
Immunogen:	Full length human recombinant protein of human SERPINB3 (NM_006919) produced in HEK293T cell.
Formulation:	Stored in PBS (pH 7.4) containing 0.05% sodium azide and up to 5% trehalose
Concentration:	0.5 mg/ml
Storage:	Store at -20°C as received.
Stability:	Stable for 12 months from date of receipt.
Gene Name:	serpin family B member 3
Database Link:	NP_008850 Entrez Gene 6317 Human
Synonyms:	HsT1196; SCC; SCCA-1; SCCA-PD; SCCA1; SSCA1; T4-A
Matched ELISA Pair:	TA700493
Protein Families:	Druggable Genome, Secreted Protein

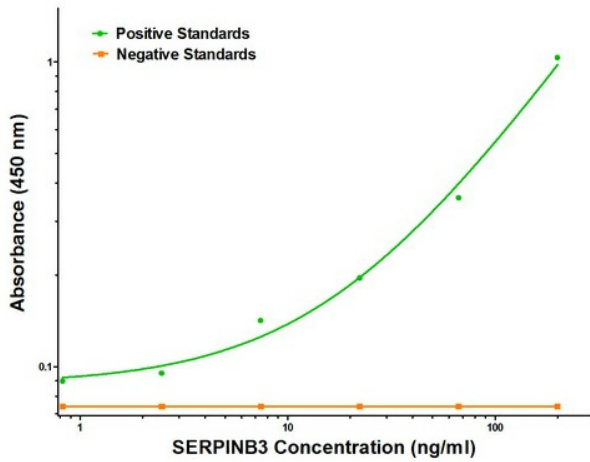


[View online »](#)

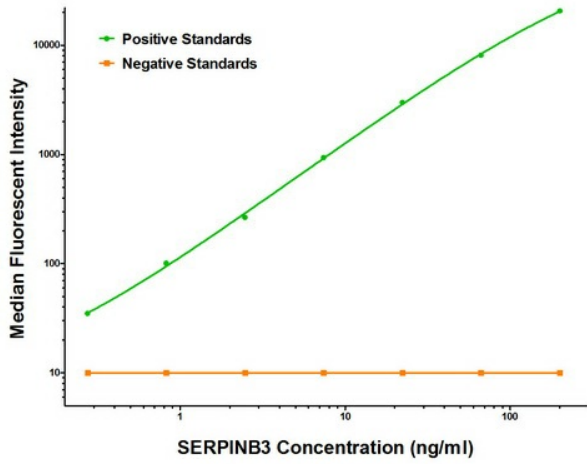
Product images:



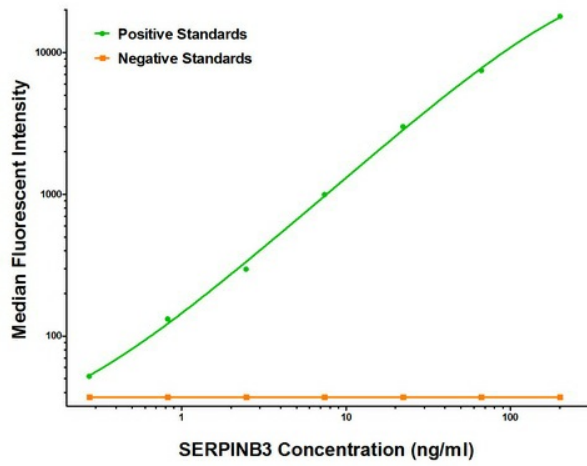
SERPINB3 ELISA with 1G9 Capture (TA600493) and 2H2 Detection ([TA700493]) Antibodies. Substrate used: Recombinant Human SERPINB3 ([TP302683])



SERPINB3 ELISA with 1G9 Capture (TA600493) and 1G1 Detection ([TA700494]) Antibodies. Substrate used: Recombinant Human SERPINB3 ([TP302683])



SERPINB3 Luminex ELISA with 1G9 Capture (TA600493) and 1G1 Detection ([TA700494]) Antibodies. Substrate used: Recombinant Human SERPINB3 ([TP302683])



SERPINB3 Luminex ELISA with 1G9 Capture (TA600493) and 2H2 Detection ([TA700493]) Antibodies. Substrate used: Recombinant Human SERPINB3 ([TP302683])