

Product datasheet for **TA600487**

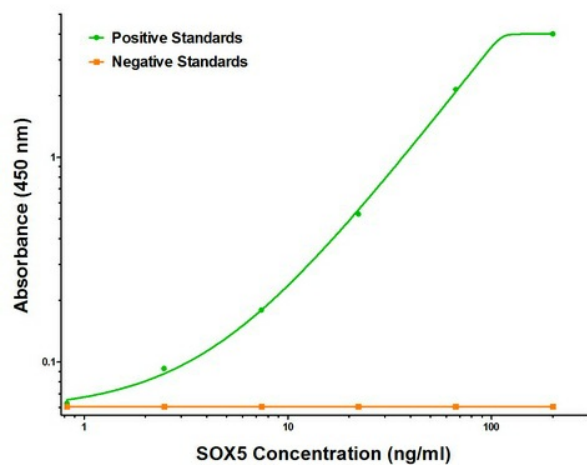
SOX5 Mouse Monoclonal Capture Antibody [Clone ID: OTI2A8]

Product data:

Product Type:	Primary Antibodies
Clone Name:	OTI2A8
Applications:	ELISA
Recommended Dilution:	1:100 - 1:1000
Reactivity:	Human, Mouse, Rat
Host:	Mouse
Isotype:	IgG1
Clonality:	Monoclonal
Immunogen:	Full length human recombinant protein of human SOX5 (NM_006940) produced in HEK293T cell.
Formulation:	Stored in PBS (pH 7.4) containing 0.05% sodium azide and up to 5% trehalose
Concentration:	0.5 mg/ml
Conjugation:	Unconjugated
Storage:	Store at -20°C. Avoid repeat freeze/thaw cycles.
Stability:	Stable for 12 months from date of receipt.
Gene Name:	SRY-box transcription factor 5
Database Link:	NP_008871 Entrez Gene 20678 MouseEntrez Gene 140587 RatEntrez Gene 6660 Human P35711
Synonyms:	L-SOX5; L-SOX5B; L-SOX5F; LAMSHF
Matched ELISA Pair:	TA700050
Protein Families:	Transcription Factors



[View online »](#)

Product images:

SOX5 ELISA with 2A8 Capture (TA600487) and AT-1B12 Detection ([TA700050]) Antibodies.
Substrate used: Recombinant Human SOX5 ([TP324228])