

## Product datasheet for **TA600481**

### GIMAP4 Mouse Monoclonal Capture Antibody [Clone ID: OTI1C6]

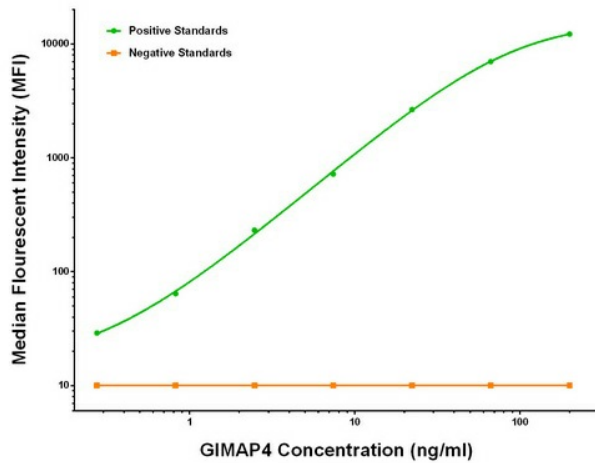
#### Product data:

Product Type:	Primary Antibodies
Clone Name:	OTI1C6
Applications:	LMNX
Recommended Dilution:	1:100 - 1:1000
Reactivity:	Human
Host:	Mouse
Isotype:	IgG1
Clonality:	Monoclonal
Immunogen:	Full length human recombinant protein of human GIMAP4 (NM_0168326) produced in HEK293T cell.
Formulation:	Stored in PBS (pH 7.4) containing 0.05% sodium azide and up to 5% trehalose
Concentration:	0.5 mg/ml
Conjugation:	Unconjugated
Storage:	Store at -20°C. Avoid repeat freeze/thaw cycles.
Stability:	Stable for 12 months from date of receipt.
Gene Name:	GTPase, IMAP family member 4
Database Link:	<a href="#">NP_060796</a> <a href="#">Entrez Gene 55303 Human</a> <a href="#">Q9NUV9</a>
Synonyms:	IAN-1; IAN1; IMAP4; MSTP062
Matched ELISA Pair:	TA700481



[View online »](#)

## Product images:



GIMAP4 Luminex ELISA with 1C6 Capture (TA600481) and 2F9 Detection ([TA700481]) Antibodies. Substrate used: Recombinant Human GIMAP4 ([TP304653])