

Product datasheet for **TA600480**

GOLPH2 (GOLM1) Mouse Monoclonal Capture Antibody [Clone ID: OTI2F3]

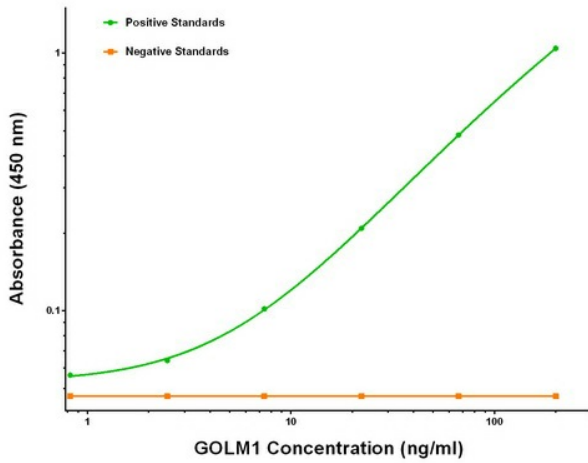
Product data:

Product Type:	Primary Antibodies
Clone Name:	OTI2F3
Applications:	ELISA, LMNX
Recommended Dilution:	1:100 - 1:1000
Reactivity:	Human
Host:	Mouse
Isotype:	IgG1
Clonality:	Monoclonal
Immunogen:	Full length human recombinant protein of human GOLM1 (NM_016548) produced in HEK293T cell.
Formulation:	Stored in PBS (pH 7.4) containing 0.05% sodium azide and up to 5% trehalose
Concentration:	0.5 mg/ml
Conjugation:	Unconjugated
Storage:	Store at -20°C. Avoid repeat freeze/thaw cycles.
Stability:	Stable for 12 months from date of receipt.
Gene Name:	golgi membrane protein 1
Database Link:	NP_057632 Entrez Gene 51280 Human Q8NBJ4
Synonyms:	bA379P1.3; C9orf155; GOLPH2; GP73; HEL46; PSEC0257
Matched ELISA Pair:	TA700480
Protein Families:	Transmembrane

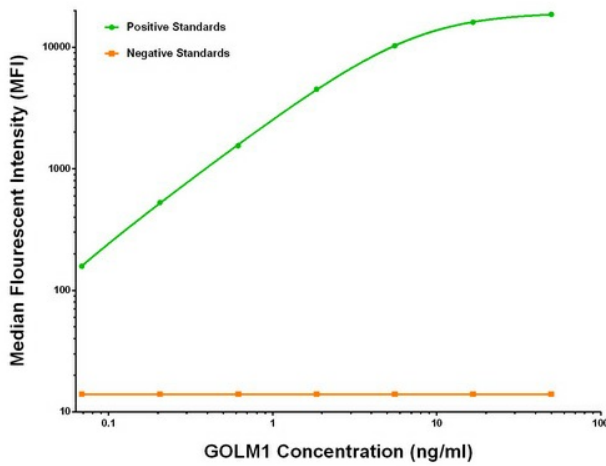


[View online »](#)

Product images:



GOLM1 ELISA with 2F3 Capture (TA600480) and 2D6 Detection ([TA700480]) Antibodies. Substrate used: Recombinant Human GOLM1 ([TP314745])



GOLM1 Luminex ELISA with 2F3 Capture (TA600480) and 2D6 Detection ([TA700480]) Antibodies. Substrate used: Recombinant Human GOLM1 ([TP314745])