

## Product datasheet for **TA600479**

### **GOLPH2 (GOLM1) Mouse Monoclonal Capture Antibody [Clone ID: OTI2D6]**

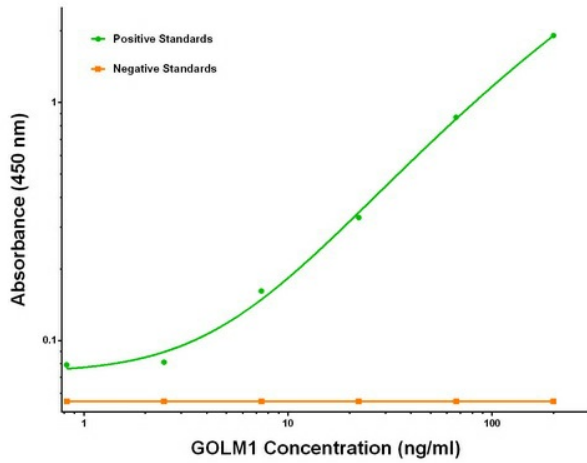
#### **Product data:**

Product Type:	Primary Antibodies
Clone Name:	OTI2D6
Applications:	ELISA, LMNX
Recommended Dilution:	1:100 - 1:1000
Reactivity:	Human
Host:	Mouse
Isotype:	IgG1
Clonality:	Monoclonal
Immunogen:	Full length human recombinant protein of human GOLM1 (NM_016548) produced in HEK293T cell.
Formulation:	Stored in PBS (pH 7.4) containing 0.05% sodium azide and up to 5% trehalose
Concentration:	0.5 mg/ml
Conjugation:	Unconjugated
Storage:	Store at -20°C. Avoid repeat freeze/thaw cycles.
Stability:	Stable for 12 months from date of receipt.
Gene Name:	golgi membrane protein 1
Database Link:	<a href="#">NP_057632</a> <a href="#">Entrez Gene 51280 Human</a> <a href="#">Q8NBJ4</a>
Synonyms:	bA379P1.3; C9orf155; GOLPH2; GP73; HEL46; PSEC0257
Matched ELISA Pair:	TA700479
Protein Families:	Transmembrane

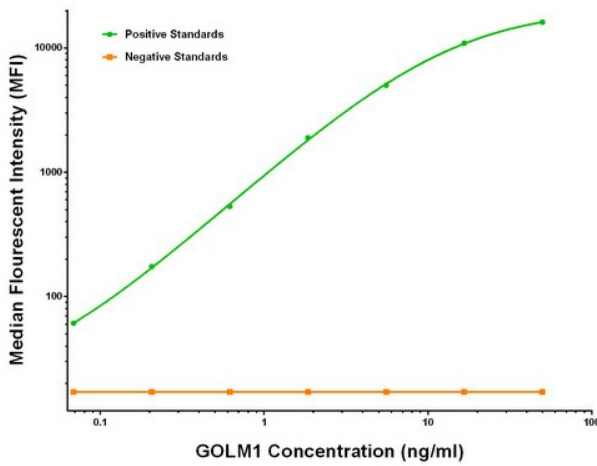


[View online »](#)

Product images:



GOLM1 ELISA with 2D6 Capture (TA600479) and 2F3 Detection ([TA700479]) Antibodies. Substrate used: Recombinant Human GOLM1 ([TP314745])



GOLM1 Luminex ELISA with 2D6 Capture (TA600479) and 2F3 Detection ([TA700479]) Antibodies. Substrate used: Recombinant Human GOLM1 ([TP314745])