

## Product datasheet for **TA600478**

### Fibrinogen gamma chain (FGG) Mouse Monoclonal Capture Antibody [Clone ID: OTI2B6]

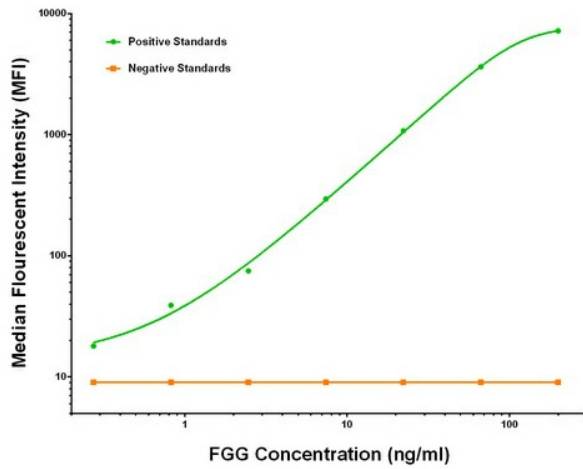
#### Product data:

Product Type:	Primary Antibodies
Clone Name:	OTI2B6
Applications:	LMNX
Recommended Dilution:	1:100 - 1:1000
Reactivity:	Human
Host:	Mouse
Isotype:	IgG1
Clonality:	Monoclonal
Immunogen:	Full length human recombinant protein of human FGG (NM_000509) produced in HEK293T cell.
Formulation:	Stored in PBS (pH 7.4) containing 0.05% sodium azide and up to 5% trehalose
Concentration:	0.5 mg/ml
Conjugation:	Unconjugated
Storage:	Store at -20°C. Avoid repeat freeze/thaw cycles.
Stability:	Stable for 12 months from date of receipt.
Gene Name:	fibrinogen gamma chain
Database Link:	<a href="#">NP_000500</a> <a href="#">Entrez Gene 2266 Human</a> <a href="#">P02679</a>
Synonyms:	fibrinogen; fibrinogen gamma chain; gamma chain; gamma polypeptide
Matched ELISA Pair:	TA700476
Protein Families:	Druggable Genome, Secreted Protein, Transmembrane
Protein Pathways:	Complement and coagulation cascades



[View online »](#)

Product images:



FGG Luminex ELISA with 2B6 Capture (TA600478) and 2B6 Detection ([TA700476]) Antibodies. Substrate used: Recombinant Human FGG ([TP302770])