

## Product datasheet for **TA600472**

### EGFR Mouse Monoclonal Capture Antibody [Clone ID: OTI3D7]

#### Product data:

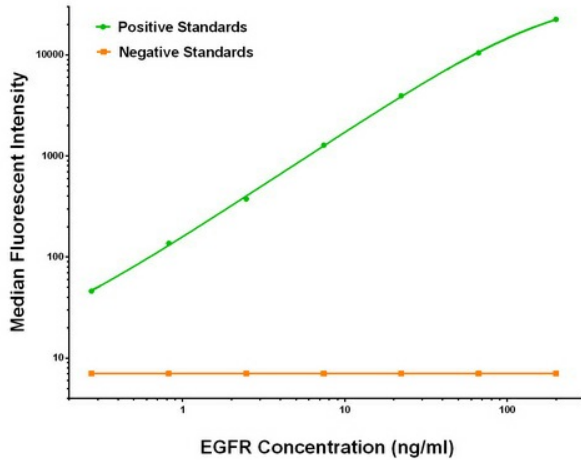
Product Type:	Primary Antibodies
Clone Name:	OTI3D7
Applications:	ELISA
Recommended Dilution:	ELISA 1:100-1:1000
Reactivity:	Human, Mouse, Rat
Host:	Mouse
Isotype:	IgG1
Clonality:	Monoclonal
Immunogen:	Full length human recombinant protein of human EGFR (NM_201283) produced in HEK293T cell.
Formulation:	Stored in PBS (pH 7.4) containing 0.05% sodium azide and up to 5% trehalose
Concentration:	0.5 mg/ml
Conjugation:	Unconjugated
Storage:	Store at -20°C. Avoid repeat freeze/thaw cycles.
Stability:	Stable for 12 months from date of receipt.
Gene Name:	epidermal growth factor receptor
Database Link:	<a href="#">NP_958440</a> <a href="#">Entrez Gene 13649 Mouse</a> <a href="#">Entrez Gene 24329 Rat</a> <a href="#">Entrez Gene 1956 Human</a> <a href="#">P00533</a>
Synonyms:	ERBB; ERBB1; ERBP; HER1; mENA; NISBD2; PIG61
Matched ELISA Pair:	TA700469
Protein Families:	Adult stem cells, Cancer stem cells, Druggable Genome, ES Cell Differentiation/IPS, Protein Kinase, Secreted Protein, Stem cell relevant signaling - JAK/STAT signaling pathway, Transmembrane



[View online »](#)

**Protein Pathways:**

Adherens junction, Bladder cancer, Calcium signaling pathway, Colorectal cancer, Cytokine-cytokine receptor interaction, Dorso-ventral axis formation, Endocytosis, Endometrial cancer, Epithelial cell signaling in Helicobacter pylori infection, ErbB signaling pathway, Focal adhesion, Gap junction, Glioma, GnRH signaling pathway, MAPK signaling pathway, Melanoma, Non-small cell lung cancer, Pancreatic cancer, Pathways in cancer, Prostate cancer, Regulation of actin cytoskeleton

**Product images:**


EGFR Luminex ELISA with 3D7 Capture (TA600472) and 2E1 Detection ([TA700469]) Antibodies. Substrate used: Recombinant Human EGFR ([TP314877])