

Product datasheet for **TA600468**

CD5 Mouse Monoclonal Capture Antibody [Clone ID: OTI6F7]

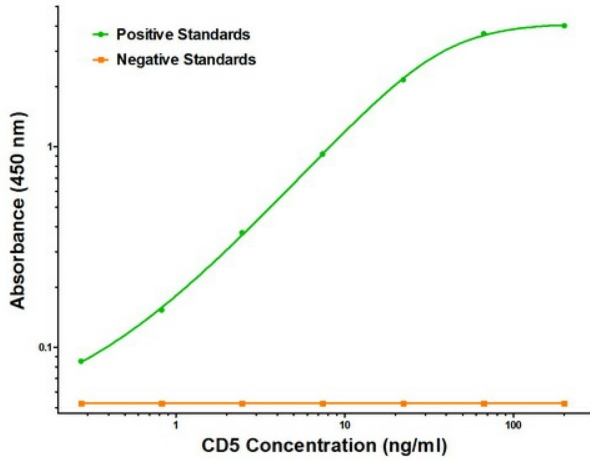
Product data:

Product Type:	Primary Antibodies
Clone Name:	OTI6F7
Applications:	ELISA
Recommended Dilution:	1:100 - 1:1000
Reactivity:	Human
Host:	Mouse
Isotype:	IgG1
Clonality:	Monoclonal
Immunogen:	Full length human recombinant protein of human CD5 (NM_014207) produced in HEK293T cell.
Formulation:	Stored in PBS (pH 7.4) containing 0.05% sodium azide and up to 5% trehalose
Concentration:	0.5 mg/ml
Conjugation:	Unconjugated
Storage:	Store at -20°C. Avoid repeat freeze/thaw cycles.
Stability:	Stable for 12 months from date of receipt.
Gene Name:	CD5 molecule
Database Link:	NP_055022 Entrez Gene 921 Human P06127
Synonyms:	LEU1; T1
Matched ELISA Pair:	TA700464, TA700468, TA700475
Protein Families:	Druggable Genome, Transmembrane
Protein Pathways:	Hematopoietic cell lineage

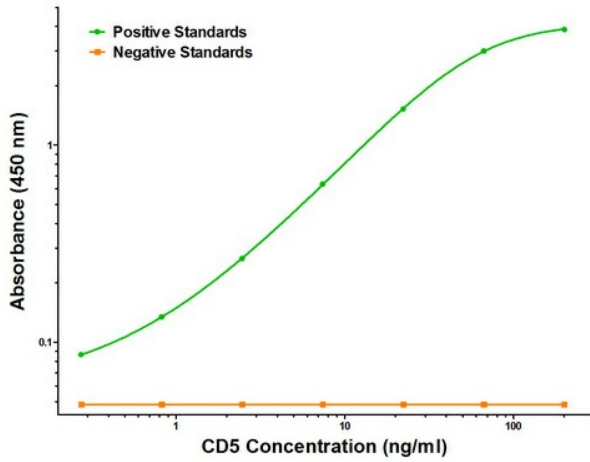


[View online »](#)

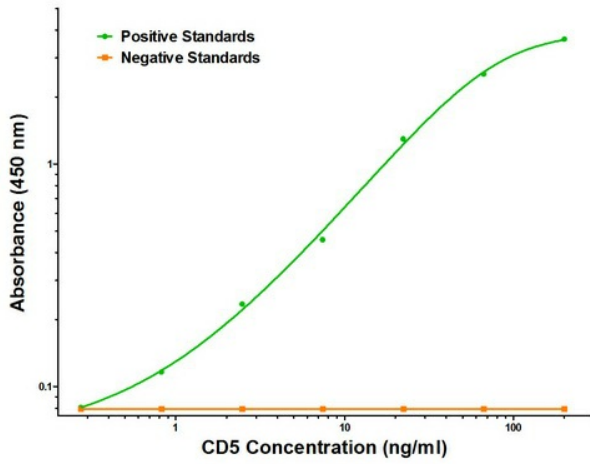
Product images:



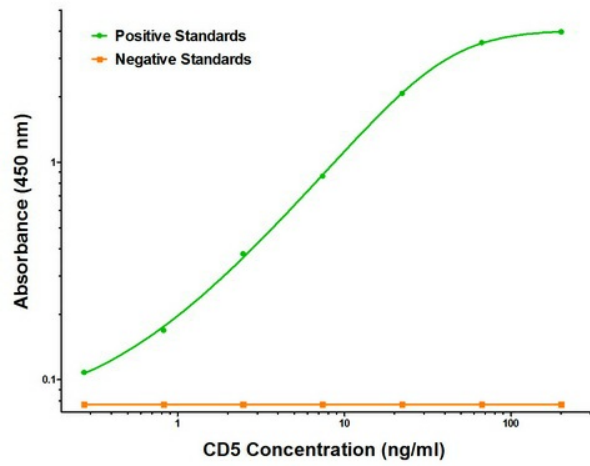
CD5 ELISA with 6F7 Capture (TA600468) and 2G8 Detection ([TA700475]) Antibodies. Substrate used: Recombinant Human CD5 ([TP306494])



CD5 ELISA with 6F7 Capture (TA600468) and 3A9 Detection ([TA700468]) Antibodies. Substrate used: Recombinant Human CD5 ([TP306494])



CD5 ELISA with 6F7 Capture (TA600468) and 5D4 Detection ([TA700464]) Antibodies. Substrate used: Recombinant Human CD5 ([TP306494])



CD5 ELISA with 6F7 Capture (TA600468) and 10H3 Detection ([TA700466]) Antibodies. Substrate used: Recombinant Human CD5 ([TP306494])