

Product datasheet for **TA600463**

NM23A (NME1) Mouse Monoclonal Capture Antibody [Clone ID: OTI22F10]

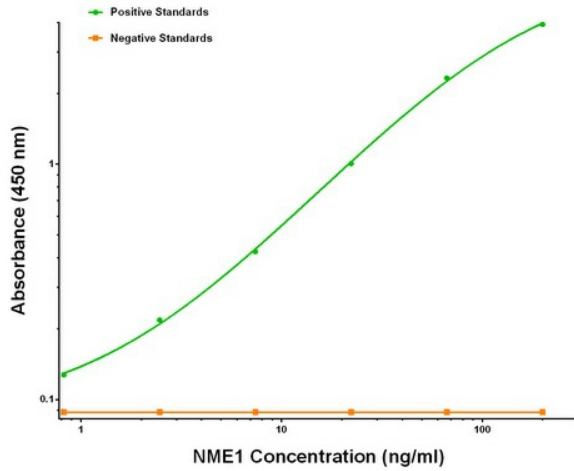
Product data:

| | |
|-----------------------|--|
| Product Type: | Primary Antibodies |
| Clone Name: | OTI22F10 |
| Applications: | ELISA |
| Recommended Dilution: | ELISA 1:100-1:1000 |
| Reactivity: | Human, Mouse, Rat |
| Host: | Mouse |
| Isotype: | IgG1 |
| Clonality: | Monoclonal |
| Immunogen: | Full length human recombinant protein of human NME1 (NM_000269) produced in HEK293T cell. |
| Formulation: | Stored in PBS (pH 7.4) containing 0.05% sodium azide and up to 5% trehalose |
| Concentration: | 0.5 mg/ml |
| Conjugation: | Unconjugated |
| Storage: | Store at -20°C. Avoid repeat freeze/thaw cycles. |
| Stability: | Stable for 12 months from date of receipt. |
| Gene Name: | NME/NM23 nucleoside diphosphate kinase 1 |
| Database Link: | NP_000260 Entrez Gene 18102 Mouse Entrez Gene 191575 Rat Entrez Gene 4830 Human P15531 |
| Synonyms: | AWD; GAAD; NB; NBS; NDKA; NDPK-A; NDPKA; NM23; NM23-H1 |
| Matched ELISA Pair: | TA700459 |
| Protein Families: | Druggable Genome, Stem cell - Pluripotency |
| Protein Pathways: | Metabolic pathways, Purine metabolism, Pyrimidine metabolism |

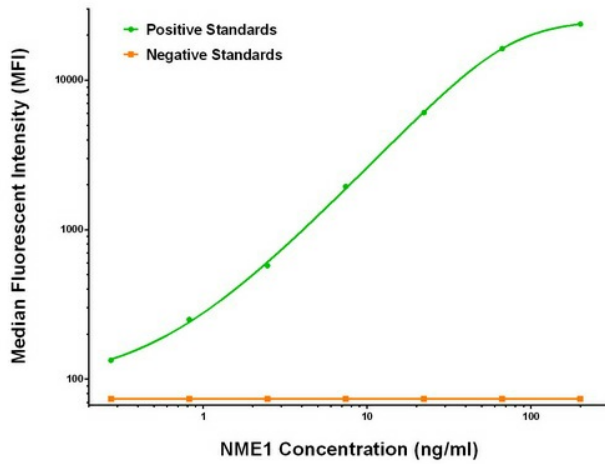


[View online »](#)

Product images:



NME1 ELISA with 22F10 Capture (TA600463) and 7D6 Detection ([TA700459]) Antibodies. Substrate used: Recombinant Human NME1 ([TP301731])



NME1 Luminex ELISA with 22F10 Capture (TA600463) and 7D6 Detection ([TA700459]) Antibodies. Substrate used: Recombinant Human NME1 ([TP301731])