

Product datasheet for **TA600462**

NM23A (NME1) Mouse Monoclonal Capture Antibody [Clone ID: OTI7D6]

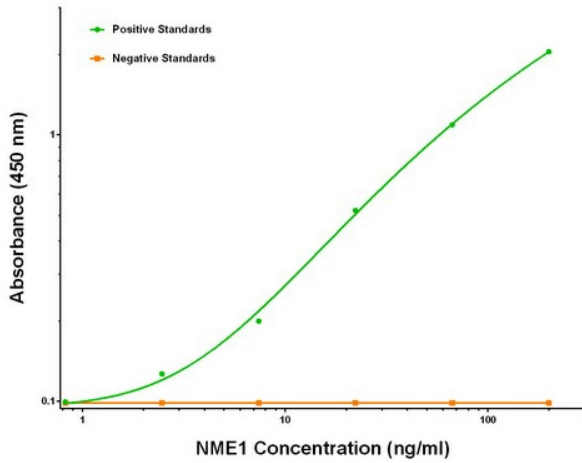
Product data:

Product Type:	Primary Antibodies
Clone Name:	OTI7D6
Applications:	ELISA
Recommended Dilution:	ELISA 1:100-1:1000
Reactivity:	Human, Mouse, Rat
Host:	Mouse
Isotype:	IgG1
Clonality:	Monoclonal
Immunogen:	Full length human recombinant protein of human NME1 (NM_000269) produced in HEK293T cell.
Formulation:	Stored in PBS (pH 7.4) containing 0.05% sodium azide and up to 5% trehalose
Concentration:	0.5 mg/ml
Conjugation:	Unconjugated
Storage:	Store at -20°C. Avoid repeat freeze/thaw cycles.
Stability:	Stable for 12 months from date of receipt.
Gene Name:	NME/NM23 nucleoside diphosphate kinase 1
Database Link:	NP_000260 Entrez Gene 18102 Mouse Entrez Gene 191575 Rat Entrez Gene 4830 Human P15531
Synonyms:	AWD; GAAD; NB; NBS; NDKA; NDPK-A; NDPKA; NM23; NM23-H1
Matched ELISA Pair:	TA700463
Protein Families:	Druggable Genome, Stem cell - Pluripotency
Protein Pathways:	Metabolic pathways, Purine metabolism, Pyrimidine metabolism

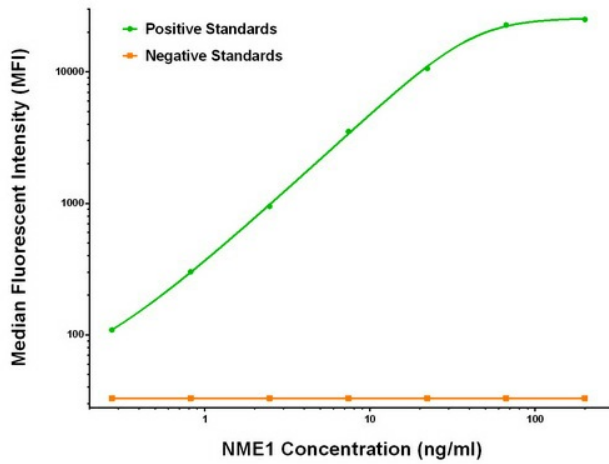


[View online »](#)

Product images:



NME1 ELISA with 7D6 Capture (TA600462) and 4H2 Detection ([TA700463]) Antibodies. Substrate used: Recombinant Human NME1 ([TP301731])



NME1 Luminex ELISA with 7D6 Capture (TA600462) and 4H2 Detection ([TA700463]) Antibodies. Substrate used: Recombinant Human NME1 ([TP301731])