

Product datasheet for **TA600450**

CA12 Mouse Monoclonal Capture Antibody [Clone ID: OTI4D1]

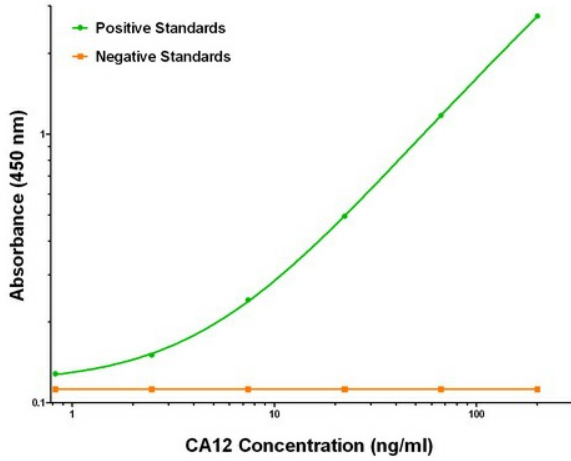
Product data:

Product Type:	Primary Antibodies
Clone Name:	OTI4D1
Applications:	ELISA, LMNX
Recommended Dilution:	1:100 - 1:1000
Reactivity:	Human
Host:	Mouse
Isotype:	IgG1
Clonality:	Monoclonal
Immunogen:	Full length human recombinant protein of human CA12 (NM_001218) produced in HEK293T cell.
Formulation:	Stored in PBS (pH 7.4) containing 0.05% sodium azide and up to 5% trehalose
Concentration:	0.5 mg/ml
Conjugation:	Unconjugated
Storage:	Store at -20°C. Avoid repeat freeze/thaw cycles.
Stability:	Stable for 12 months from date of receipt.
Gene Name:	carbonic anhydrase 12
Database Link:	NP_001209 Entrez Gene 771 Human O43570
Synonyms:	CAXII; HsT18816
Matched ELISA Pair:	TA700448, TA700450
Protein Families:	Druggable Genome, Transmembrane
Protein Pathways:	Nitrogen metabolism

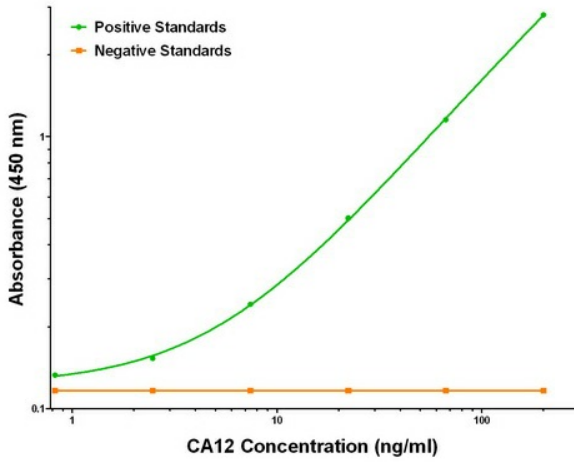


[View online »](#)

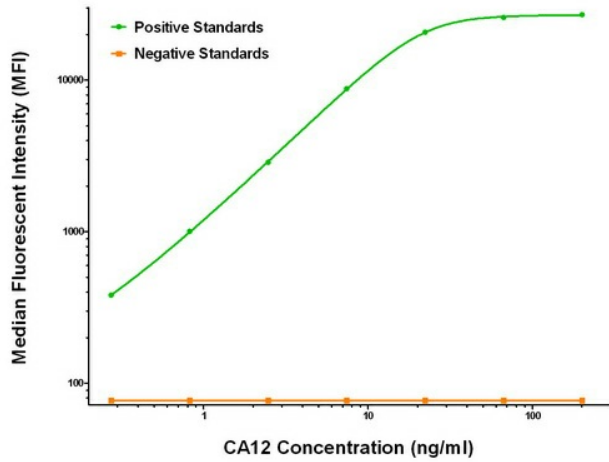
Product images:



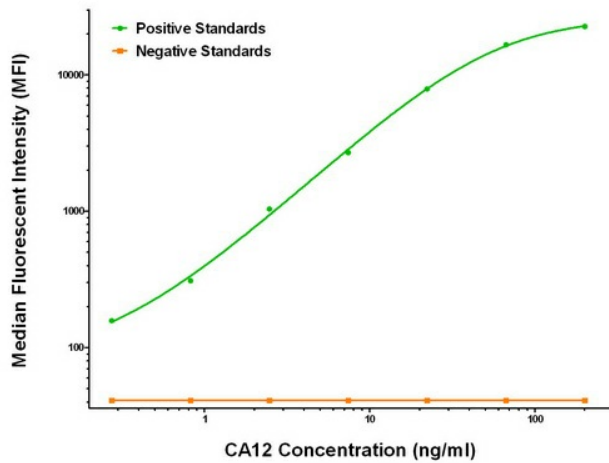
CA12 ELISA with 4D1 Capture (TA600450) and 1A6 Detection ([TA700450]) Antibodies. Substrate used: Recombinant Human CA12 ([TP304810])



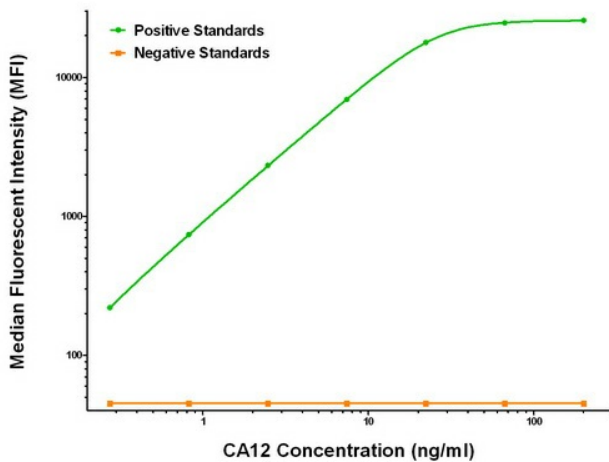
CA12 ELISA with 4D1 Capture (TA600450) and 4G3 Detection ([TA700448]) Antibodies. Substrate used: Recombinant Human CA12 ([TP304810])



CA12 Luminex ELISA with 4D1 Capture (TA600450) and 1A6 Detection ([TA700450]) Antibodies. Substrate used: Recombinant Human CA12 ([TP304810])



CA12 Luminex ELISA with 4D1 Capture (TA600450) and 3F1 Detection ([TA700451]) Antibodies. Substrate used: Recombinant Human CA12 ([TP304810])



CA12 Luminex ELISA with 4D1 Capture (TA600450) and 4G3 Detection ([TA700448]) Antibodies. Substrate used: Recombinant Human CA12 ([TP304810])