

## Product datasheet for **TA600445**

### EMA (MUC1) Mouse Monoclonal Capture Antibody [Clone ID: OTI1F3]

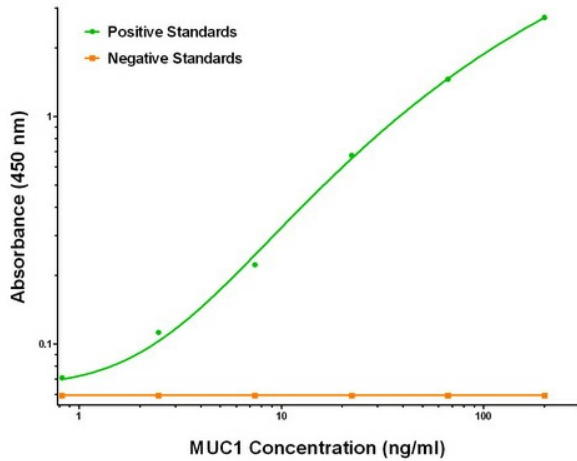
#### Product data:

Product Type:	Primary Antibodies
Clone Name:	OTI1F3
Applications:	ELISA, LMNX
Recommended Dilution:	1:100 - 1:1000
Reactivity:	Human
Host:	Mouse
Isotype:	IgG1
Clonality:	Monoclonal
Immunogen:	Full length human recombinant protein of human MUC1 (NM_001018016) produced in HEK293T cell.
Formulation:	Stored in PBS (pH 7.4) containing 0.05% sodium azide and up to 5% trehalose
Concentration:	0.5 mg/ml
Conjugation:	Unconjugated
Storage:	Store at -20°C. Avoid repeat freeze/thaw cycles.
Stability:	Stable for 12 months from date of receipt.
Gene Name:	mucin 1, cell surface associated
Database Link:	<a href="#">NP_001018016</a> <a href="#">Entrez Gene 4582 Human P15941</a>
Synonyms:	ADMCKD; ADMCKD1; CA 15-3; CD227; EMA; H23AG; KL-6; MAM6; MCD; MCKD; MCKD1; MUC-1; SEC
Matched ELISA Pair:	TA700445, TA700446
Protein Families:	Druggable Genome, Secreted Protein, Transmembrane

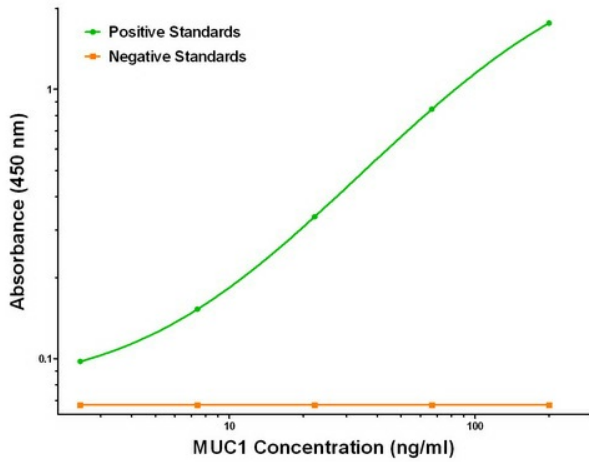


[View online »](#)

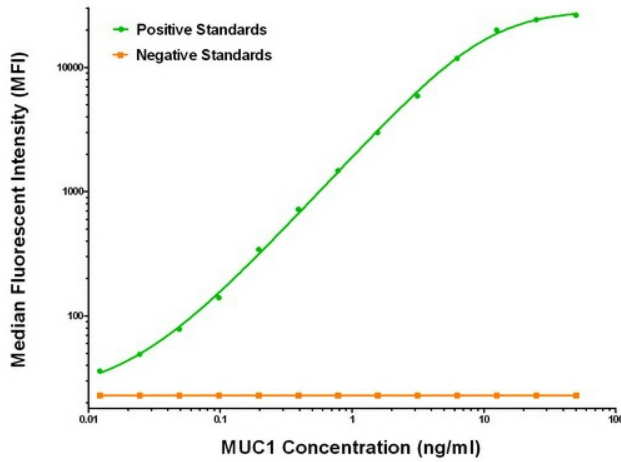
Product images:



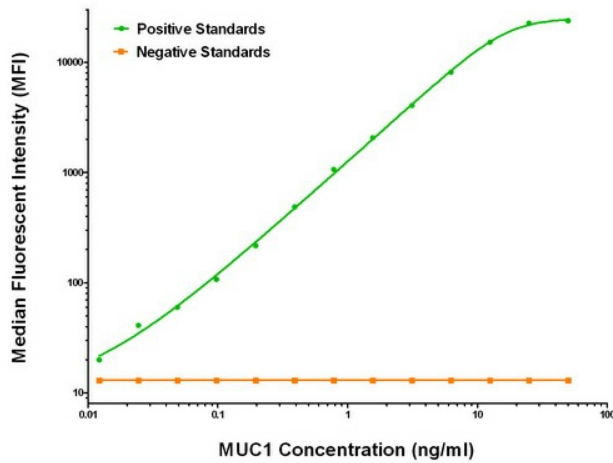
MUC1 ELISA with 1F3 Capture (TA600445) and 2E3 Detection ([TA700445]) Antibodies. Substrate used: Recombinant Human MUC1 ([TP321390])



MUC1 ELISA with 1F3 Capture (TA600445) and 4A5 Detection ([TA700446]) Antibodies. Substrate used: Recombinant Human MUC1 ([TP321390])



MUC1 Luminex ELISA with 1F3 Capture (TA600445) and 2E3 Detection ([TA700445]) Antibodies. Substrate used: Recombinant Human MUC1 ([TP321390])



MUC1 Luminex ELISA with 1F3 Capture (TA600445) and 4A5 Detection ([TA700446]) Antibodies. Substrate used: Recombinant Human MUC1 ([TP321390])