

## Product datasheet for **TA600443**

### FTCD Mouse Monoclonal Capture Antibody [Clone ID: OTI4A7]

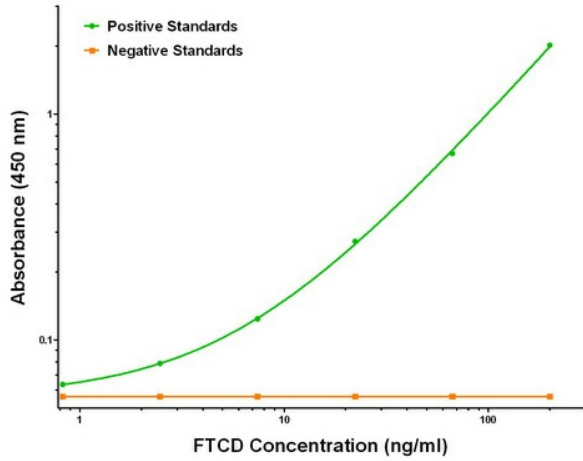
#### Product data:

Product Type:	Primary Antibodies
Clone Name:	OTI4A7
Applications:	ELISA, LMNX
Recommended Dilution:	1:100 - 1:1000
Reactivity:	Human
Host:	Mouse
Isotype:	IgG1
Clonality:	Monoclonal
Immunogen:	Full length human recombinant protein of human FTCD (NM_006657) produced in HEK293T cell.
Formulation:	Stored in PBS (pH 7.4) containing 0.05% sodium azide and up to 5% trehalose
Concentration:	0.5 mg/ml
Conjugation:	Unconjugated
Storage:	Store at -20°C. Avoid repeat freeze/thaw cycles.
Stability:	Stable for 12 months from date of receipt.
Gene Name:	formimidoyltransferase cyclodeaminase
Database Link:	<a href="#">NP_006648</a> <a href="#">Entrez Gene 10841 Human</a> <a href="#">O95954</a>
Synonyms:	LCHC1
Matched ELISA Pair:	TA700443
Protein Pathways:	Histidine metabolism, Metabolic pathways, One carbon pool by folate

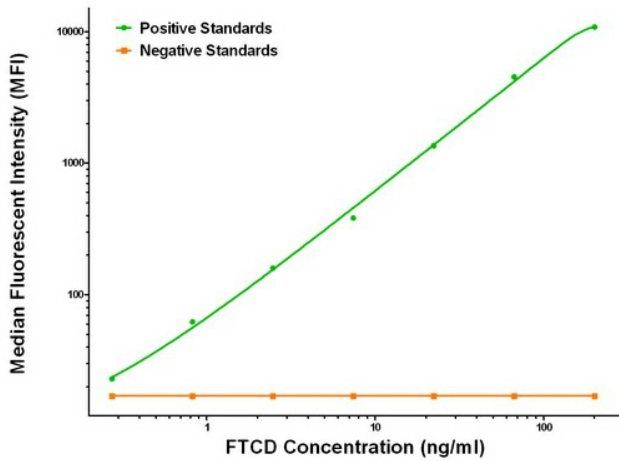


[View online »](#)

Product images:



FTCD ELISA with 4A7 Capture (TA600443) and 8F12 Detection ([TA700443]) Antibodies. Substrate used: Recombinant Human FTCD ([TP308573])



FTCD Luminex ELISA with 4A7 Capture (TA600443) and 8F12 Detection ([TA700443]) Antibodies. Substrate used: Recombinant Human FTCD ([TP308573])