

Product datasheet for **TA600440**

PADI4 Mouse Monoclonal Capture Antibody [Clone ID: OTI4H5]

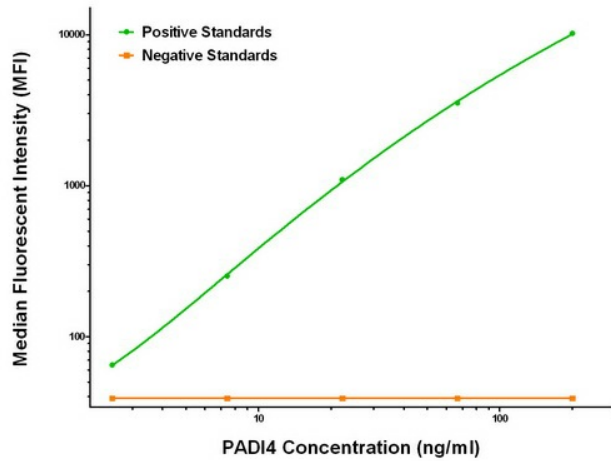
Product data:

Product Type:	Primary Antibodies
Clone Name:	OTI4H5
Applications:	LMNX
Recommended Dilution:	1:100 - 1:1000
Reactivity:	Human
Host:	Mouse
Isotype:	IgG1
Clonality:	Monoclonal
Immunogen:	Full length human recombinant protein of human PADI4 (NM_012387) produced in HEK293T cell.
Formulation:	Stored in PBS (pH 7.4) containing 0.05% sodium azide and up to 5% trehalose
Concentration:	0.5 mg/ml
Conjugation:	Unconjugated
Storage:	Store at -20°C. Avoid repeat freeze/thaw cycles.
Stability:	Stable for 12 months from date of receipt.
Gene Name:	peptidyl arginine deiminase 4
Database Link:	NP_036519 Entrez Gene 23569 Human Q9UM07
Synonyms:	PAD; PAD4; PADI5; PDI4; PDI5
Matched ELISA Pair:	TA700440



[View online »](#)

Product images:



PADI4 Luminex ELISA with 4H5 Capture (TA600440) and 5C10 Detection ([TA700440]) Antibodies. Substrate used: Recombinant Human PADI4 ([TP306501])