

## Product datasheet for **TA600435**

### Epoxide hydrolase (EPHX1) Mouse Monoclonal Capture Antibody [Clone ID: OTI2C1]

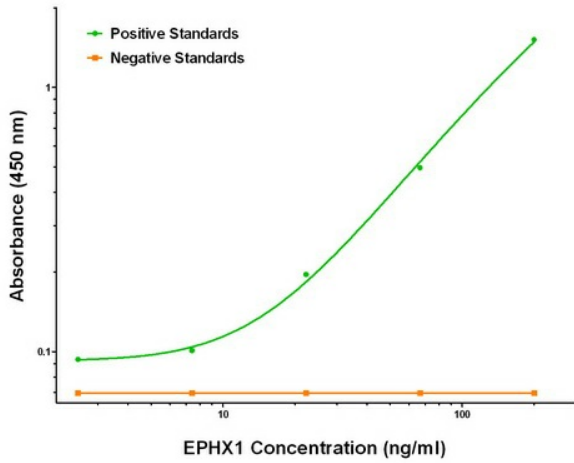
#### Product data:

Product Type:	Primary Antibodies
Clone Name:	OTI2C1
Applications:	ELISA, LMNX
Recommended Dilution:	1:100 - 1:1000
Reactivity:	Human
Host:	Mouse
Isotype:	IgG1
Clonality:	Monoclonal
Immunogen:	Full length human recombinant protein of human EPHX1 (NM_000120) produced in HEK293T cell.
Formulation:	Stored in PBS (pH 7.4) containing 0.05% sodium azide and up to 5% trehalose
Concentration:	0.5 mg/ml
Conjugation:	Unconjugated
Storage:	Store at -20°C. Avoid repeat freeze/thaw cycles.
Stability:	Stable for 12 months from date of receipt.
Gene Name:	epoxide hydrolase 1
Database Link:	<a href="#">NP_000111</a> <a href="#">Entrez Gene 2052 Human P07099</a>
Synonyms:	EPHX; EPOX; HYL1; MEH
Matched ELISA Pair:	TA700435
Protein Families:	Druggable Genome, Protease
Protein Pathways:	Metabolism of xenobiotics by cytochrome P450

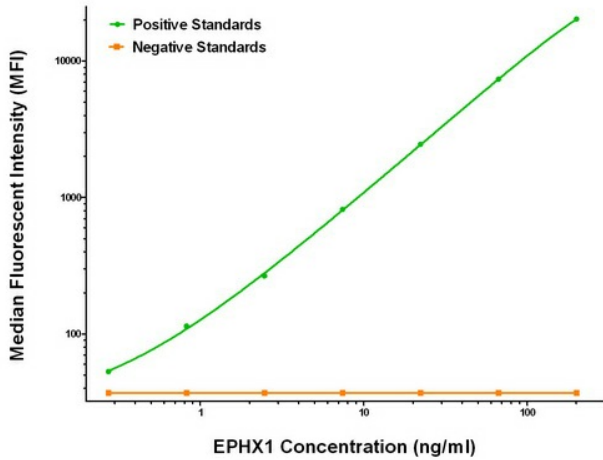


[View online »](#)

Product images:



EPHX1 ELISA with 2C1 Capture (TA600435) and 4G4 Detection ([TA700435]) Antibodies. Substrate used: Recombinant Human EPHX1 ([TP300621])



EPHX1 Luminex ELISA with 2C1 Capture (TA600435) and 4G4 Detection ([TA700435]) Antibodies. Substrate used: Recombinant Human EPHX1 ([TP300621])