

## Product datasheet for **TA600431**

### HDAC10 Mouse Monoclonal Capture Antibody [Clone ID: OTI9B5]

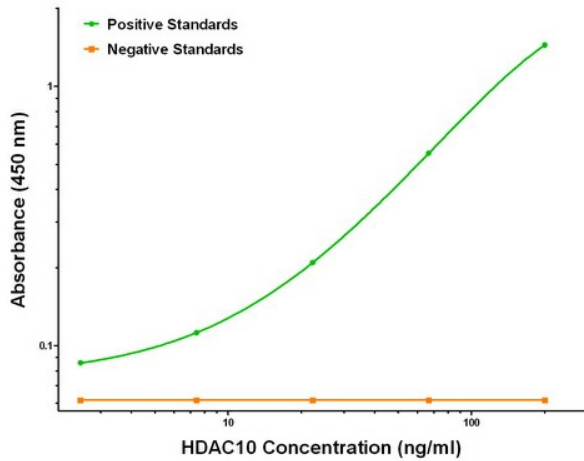
#### Product data:

|                       |  |
|-----------------------|--|
| Product Type:         | Primary Antibodies   |
| Clone Name:           | OTI9B5   |
| Applications:         | ELISA, LMNX  |
| Recommended Dilution: | 1:100 - 1:1000   |
| Reactivity:           | Human  |
| Host:                 | Mouse  |
| Isotype:              | IgG1   |
| Clonality:            | Monoclonal   |
| Immunogen:            | Full length human recombinant protein of human HDAC10 (NM_032019) produced in HEK293T cell.    |
| Formulation:          | Stored in PBS (pH 7.4) containing 0.05% sodium azide and up to 5% trehalose                    |
| Concentration:        | 0.5 mg/ml  |
| Conjugation:          | Unconjugated   |
| Storage:              | Store at -20°C.<br>Avoid repeat freeze/thaw cycles.  |
| Stability:            | Stable for 12 months from date of receipt.   |
| Gene Name:            | histone deacetylase 10   |
| Database Link:        | <a href="#">NP_114408</a><br><a href="#">Entrez Gene 83933 Human</a><br><a href="#">Q969S8</a> |
| Synonyms:             | HD10   |
| Matched ELISA Pair:   | TA700431   |
| Protein Families:     | Druggable Genome, Transcription Factors  |

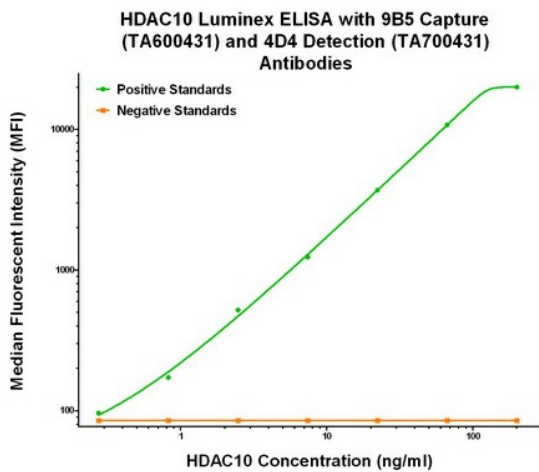


[View online »](#)

Product images:



HDAC10 ELISA with 9B5 Capture (TA600431) and 4D4 Detection ([TA700431]) Antibodies. Substrate used: Recombinant Human HDAC10 ([TP318536])



HDAC10 Luminex ELISA with 9B5 Capture (TA600431) and 4D4 Detection ([TA700431]) Antibodies. Substrate used: Recombinant Human HDAC10 ([TP318536])