

## Product datasheet for **TA600430**

### HDAC10 Mouse Monoclonal Capture Antibody [Clone ID: OTI6G5]

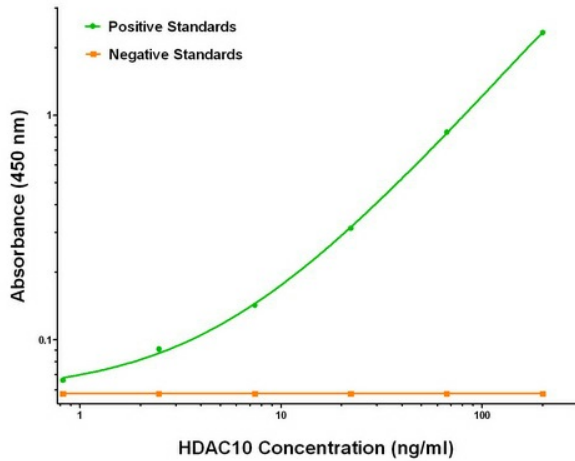
#### Product data:

Product Type:	Primary Antibodies
Clone Name:	OTI6G5
Applications:	ELISA, LMNX
Recommended Dilution:	1:100 - 1:1000
Reactivity:	Human
Host:	Mouse
Isotype:	IgG1
Clonality:	Monoclonal
Immunogen:	Full length human recombinant protein of human HDAC10 (NM_032019) produced in HEK293T cell.
Formulation:	Stored in PBS (pH 7.4) containing 0.05% sodium azide and up to 5% trehalose
Concentration:	0.5 mg/ml
Conjugation:	Unconjugated
Storage:	Store at -20°C. Avoid repeat freeze/thaw cycles.
Stability:	Stable for 12 months from date of receipt.
Gene Name:	histone deacetylase 10
Database Link:	<a href="#">NP_114408</a> <a href="#">Entrez Gene 83933 Human</a> <a href="#">Q969S8</a>
Synonyms:	HD10
Matched ELISA Pair:	TA700430
Protein Families:	Druggable Genome, Transcription Factors

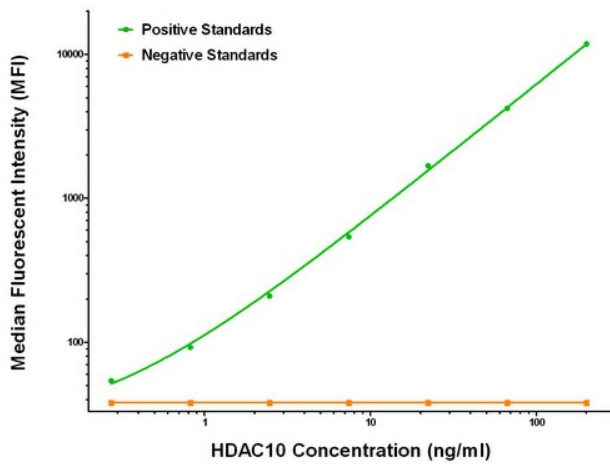


[View online »](#)

Product images:



HDAC10 ELISA with 6G5 Capture (TA600430) and 5A1 Detection ([TA700430]) Antibodies. Substrate used: Recombinant Human HDAC10 ([TP318536])



HDAC10 Luminex ELISA with 6G5 Capture (TA600430) and 5A1 Detection ([TA700430]) Antibodies. Substrate used: Recombinant Human HDAC10 ([TP318536])