

Product datasheet for **TA600427**

OTUB1 Mouse Monoclonal Capture Antibody [Clone ID: OTI5B8]

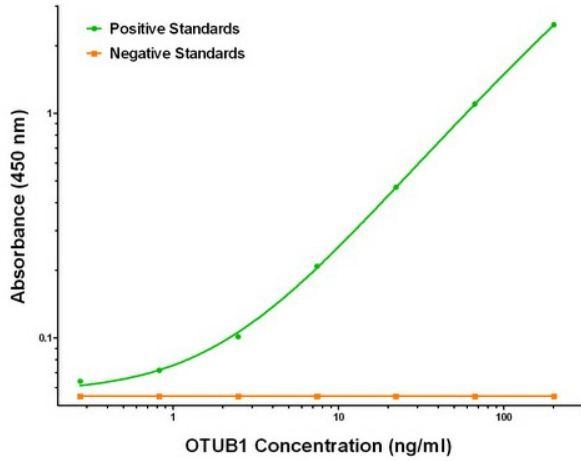
Product data:

Product Type:	Primary Antibodies
Clone Name:	OTI5B8
Applications:	ELISA, LMNX
Recommended Dilution:	1:100 - 1:1000
Reactivity:	Human, Rat
Host:	Mouse
Isotype:	IgG1
Clonality:	Monoclonal
Immunogen:	Full length human recombinant protein of human OTUB1 (NM_017670) produced in HEK293T cell.
Formulation:	Stored in PBS (pH 7.4) containing 0.05% sodium azide and up to 5% trehalose
Concentration:	0.5 mg/ml
Conjugation:	Unconjugated
Storage:	Store at -20°C. Avoid repeat freeze/thaw cycles.
Stability:	Stable for 12 months from date of receipt.
Gene Name:	OTU deubiquitinase, ubiquitin aldehyde binding 1
Database Link:	NP_060140 Entrez Gene 293705 Rat Entrez Gene 55611 Human Q96FW1
Synonyms:	HSPC263; OTB1; OTU1
Matched ELISA Pair:	TA700427
Protein Families:	Protease

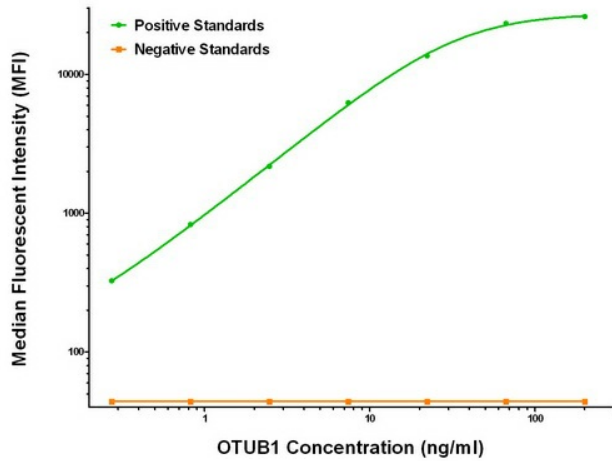


[View online »](#)

Product images:



OTUB1 ELISA with 5B8 Capture (TA600427) and 1A6 Detection ([TA700427]) Antibodies. Substrate used: Recombinant Human OTUB1 ([TP310648])



OTUB1 Luminex ELISA with 5B8 Capture (TA600427) and 1A6 Detection ([TA700427]) Antibodies. Substrate used: Recombinant Human OTUB1 ([TP310648])