

Product datasheet for **TA600423**

PIK3AP1 Mouse Monoclonal Capture Antibody [Clone ID: OTI7A11]

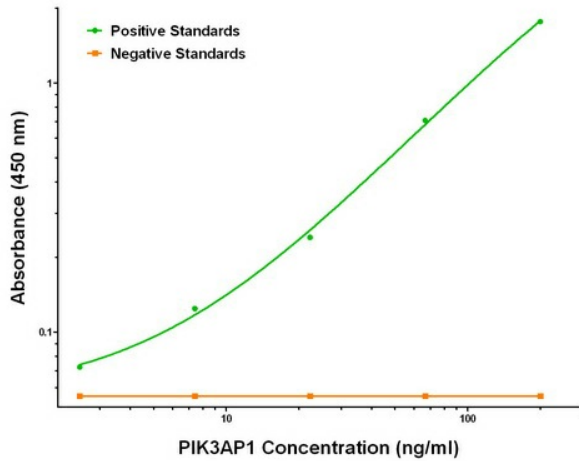
Product data:

Product Type:	Primary Antibodies
Clone Name:	OTI7A11
Applications:	ELISA, LMNX
Recommended Dilution:	1:100 - 1:1000
Reactivity:	Human, Mouse, Rat
Host:	Mouse
Isotype:	IgG1
Clonality:	Monoclonal
Immunogen:	Full length human recombinant protein of human PIK3AP1 (NM_152309) produced in HEK293T cell.
Formulation:	Stored in PBS (pH 7.4) containing 0.05% sodium azide and up to 5% trehalose
Concentration:	0.5 mg/ml
Conjugation:	Unconjugated
Storage:	Store at -20°C. Avoid repeat freeze/thaw cycles.
Stability:	Stable for 12 months from date of receipt.
Gene Name:	phosphoinositide-3-kinase adaptor protein 1
Database Link:	NP_689522 Entrez Gene 294048 RatEntrez Gene 118788 Human Q6ZUJ8
Synonyms:	BCAP
Matched ELISA Pair:	TA700418
Protein Families:	Druggable Genome
Protein Pathways:	B cell receptor signaling pathway

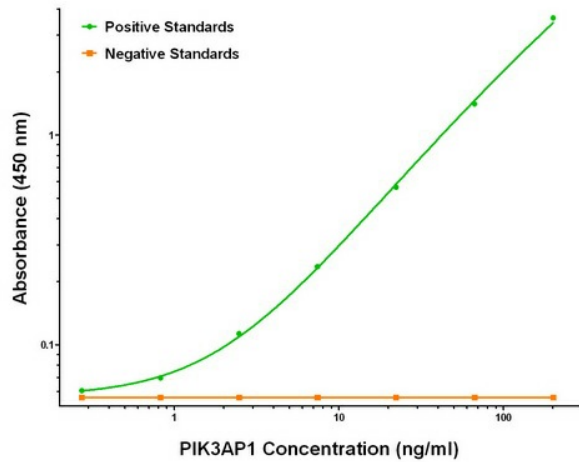


[View online »](#)

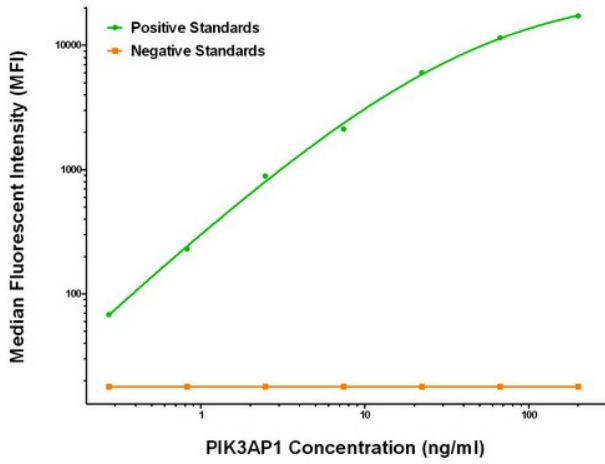
Product images:



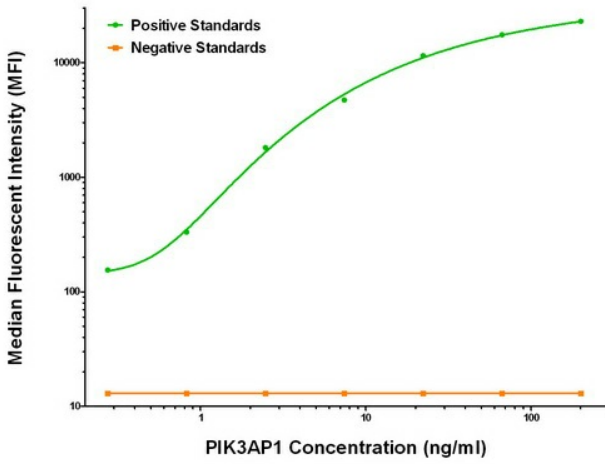
PIK3AP1 ELISA with 7A11 Capture (TA600423) and 6H6 Detection ([TA700418]) Antibodies. Substrate used: Recombinant Human PIK3AP1 ([TP314125])



PIK3AP1 ELISA with 7A11 Capture (TA600423) and 5A1 Detection ([TA700419]) Antibodies. Substrate used: Recombinant Human PIK3AP1 ([TP314125])



PIK3AP1 Luminex ELISA with 7A11 Capture (TA600423) and 5A1 Detection ([TA700419]) Antibodies. Substrate used: Recombinant Human PIK3AP1 ([TP314125])



PIK3AP1 Luminex ELISA with 7A11 Capture (TA600423) and 6H6 Detection ([TA700418]) Antibodies. Substrate used: Recombinant Human PIK3AP1 ([TP314125])