

## Product datasheet for **TA600417**

### **RbAp46 (RBBP7) Mouse Monoclonal Capture Antibody [Clone ID: OTI4C9]**

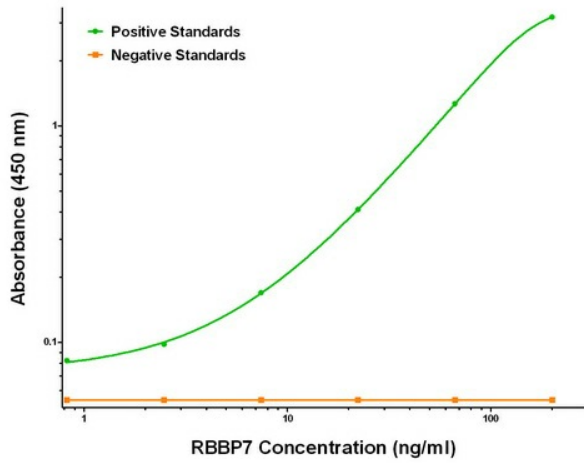
#### **Product data:**

Product Type:	Primary Antibodies
Clone Name:	OTI4C9
Applications:	ELISA, LMNX
Recommended Dilution:	1:100 - 1:1000
Reactivity:	Human, Mouse, Rat
Host:	Mouse
Isotype:	IgG1
Clonality:	Monoclonal
Immunogen:	Full length human recombinant protein of human RBBP7 (NM_002893) produced in HEK293T cell.
Formulation:	Stored in PBS (pH 7.4) containing 0.05% sodium azide and up to 5% trehalose
Concentration:	0.5 mg/ml
Conjugation:	Unconjugated
Storage:	Store at -20°C. Avoid repeat freeze/thaw cycles.
Stability:	Stable for 12 months from date of receipt.
Gene Name:	RB binding protein 7, chromatin remodeling factor
Database Link:	<a href="#">NP_002884</a> <a href="#">Entrez Gene 83712 Rat</a> <a href="#">Entrez Gene 245688 Mouse</a> <a href="#">Entrez Gene 5931 Human</a> <a href="#">Q16576</a>
Synonyms:	RbAp46
Matched ELISA Pair:	TA700050
Protein Families:	Druggable Genome

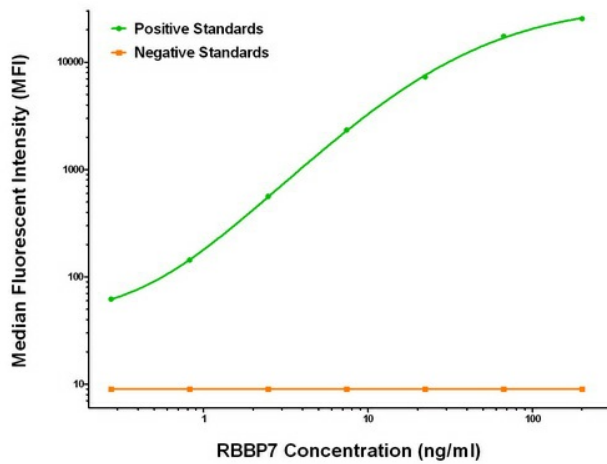


[View online »](#)

Product images:



RBBP7 ELISA with 4C9 Capture (TA600417) and Anti-Tag 1B12 Detection ([TA700050]) Antibodies. Substrate used: Recombinant Human RBBP7 ([TP317969])



RBBP7 Luminex ELISA with 4C9 Capture (TA600417) and Anti-Tag 1B12 Detection ([TA700050]) Antibodies. Substrate used: Recombinant Human RBBP7 ([TP317969])