

Product datasheet for **TA600413**

Ephrin A2 (EFNA2) Mouse Monoclonal Capture Antibody [Clone ID: OTI2B7]

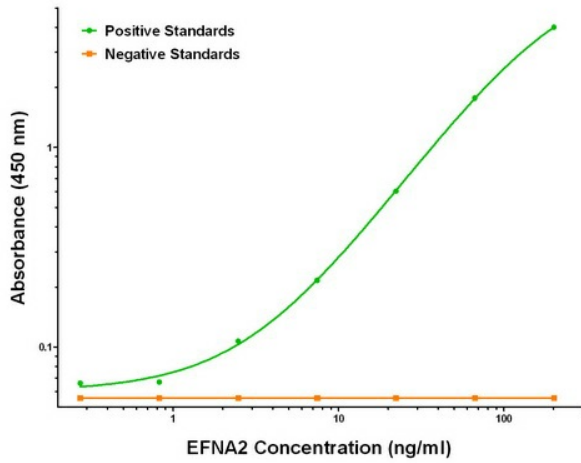
Product data:

Product Type:	Primary Antibodies
Clone Name:	OTI2B7
Applications:	ELISA
Recommended Dilution:	ELISA 1:100-1:1000
Reactivity:	Human, Mouse, Rat
Host:	Mouse
Isotype:	IgG1
Clonality:	Monoclonal
Immunogen:	Full length human recombinant protein of human EFNA2 (NM_001405) produced in HEK293T cell.
Formulation:	Stored in PBS (pH 7.4) containing 0.05% sodium azide and up to 5% trehalose
Concentration:	0.5 mg/ml
Conjugation:	Unconjugated
Storage:	Store at -20°C. Avoid repeat freeze/thaw cycles.
Stability:	Stable for 12 months from date of receipt.
Gene Name:	ephrin A2
Database Link:	NP_001396 Entrez Gene 13637 Mouse Entrez Gene 1943 Human O43921
Synonyms:	ELF-1; EPLG6; HEK7-L; LERK-6; LERK6
Matched ELISA Pair:	TA700413, TA700415
Protein Families:	Druggable Genome
Protein Pathways:	Axon guidance

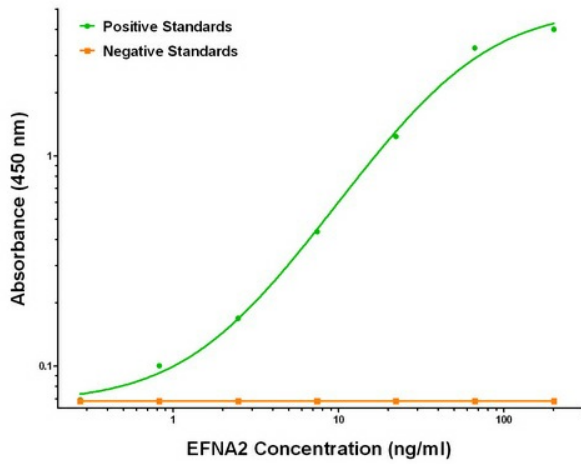


[View online »](#)

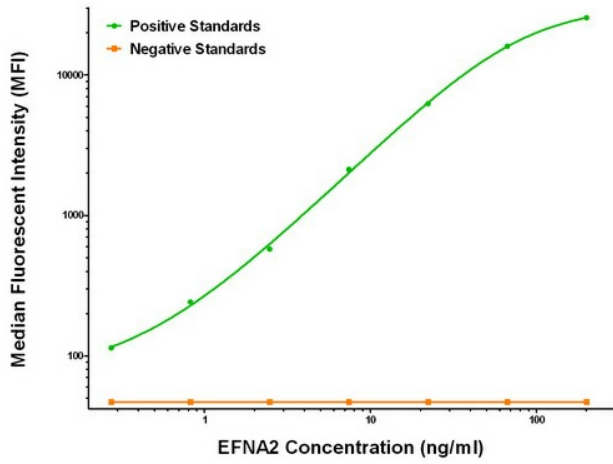
Product images:



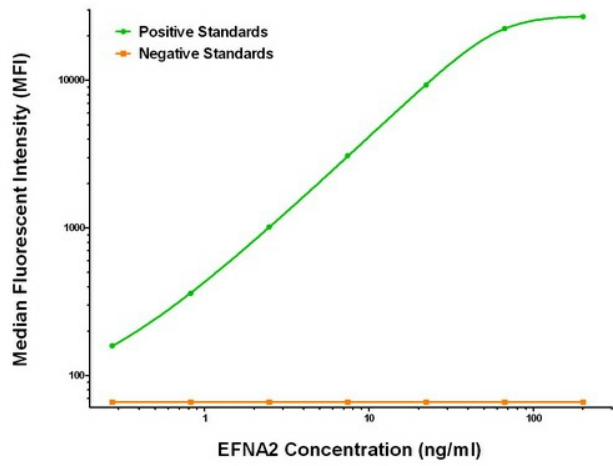
EFNA2 ELISA with 2B7 Capture (TA600413) and 2C6 Detection ([TA700413]) Antibodies. Substrate used: Recombinant Human EFNA2 ([TP313728])



EFNA2 ELISA with 2B7 Capture (TA600413) and 3E3 Detection ([TA700415]) Antibodies. Substrate used: Recombinant Human EFNA2 ([TP313728])



EFNA2 Luminex ELISA with 2B7 Capture (TA600413) and 2C6 Detection ([TA700413]) Antibodies. Substrate used: Recombinant Human EFNA2 ([TP313728])



EFNA2 Luminex ELISA with 2B7 Capture (TA600413) and 3E3 Detection ([TA700415]) Antibodies. Substrate used: Recombinant Human EFNA2 ([TP313728])