

Product datasheet for **TA600411**

Ephrin A2 (EFNA2) Mouse Monoclonal Capture Antibody [Clone ID: OT11C9]

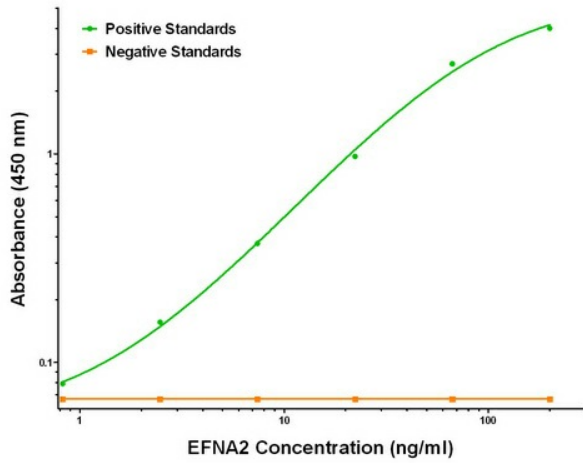
Product data:

| | |
|-----------------------|---|
| Product Type: | Primary Antibodies |
| Clone Name: | OT11C9 |
| Applications: | ELISA |
| Recommended Dilution: | ELISA 1:100-1:1000 |
| Reactivity: | Human, Mouse, Rat |
| Host: | Mouse |
| Isotype: | IgG1 |
| Clonality: | Monoclonal |
| Immunogen: | Full length human recombinant protein of human EFNA2 (NM_001405) produced in HEK293T cell. |
| Formulation: | Stored in PBS (pH 7.4) containing 0.05% sodium azide and up to 5% trehalose |
| Concentration: | 0.5 mg/ml |
| Conjugation: | Unconjugated |
| Storage: | Store at -20°C. Avoid repeat freeze/thaw cycles. |
| Stability: | Stable for 12 months from date of receipt. |
| Gene Name: | ephrin A2 |
| Database Link: | NP_001396 Entrez Gene 13637 Mouse Entrez Gene 1943 Human O43921 |
| Synonyms: | ELF-1; EPLG6; HEK7-L; LERK-6; LERK6 |
| Matched ELISA Pair: | TA700411 |
| Protein Families: | Druggable Genome |
| Protein Pathways: | Axon guidance |

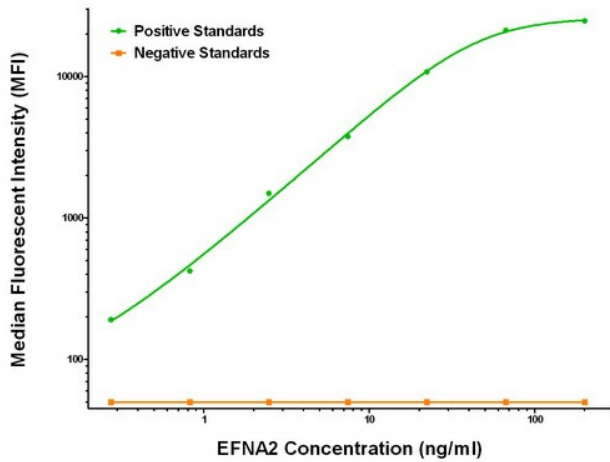


[View online »](#)

Product images:



EFNA2 ELISA with 1C9 Capture (TA600411) and 2D6 Detection ([TA700411]) Antibodies. Substrate used: Recombinant Human EFNA2 ([TP313728])



EFNA2 Luminex ELISA with 1C9 Capture (TA600411) and 2D6 Detection ([TA700411]) Antibodies. Substrate used: Recombinant Human EFNA2 ([TP313728])