

## Product datasheet for **TA600408**

### Ephrin A2 (EFNA2) Mouse Monoclonal Capture Antibody [Clone ID: OTI1E12]

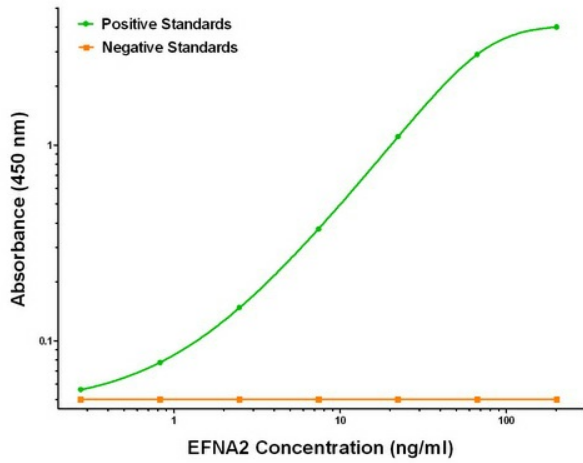
#### Product data:

|                       |   |
|-----------------------|---|
| Product Type:         | Primary Antibodies  |
| Clone Name:           | OTI1E12   |
| Applications:         | ELISA   |
| Recommended Dilution: | ELISA 1:100-1:1000  |
| Reactivity:           | Human, Mouse, Rat   |
| Host:                 | Mouse   |
| Isotype:              | IgG1  |
| Clonality:            | Monoclonal  |
| Immunogen:            | Full length human recombinant protein of human EFNA2 (NM_001405) produced in HEK293T cell.  |
| Formulation:          | Stored in PBS (pH 7.4) containing 0.05% sodium azide and up to 5% trehalose   |
| Concentration:        | 0.5 mg/ml   |
| Conjugation:          | Unconjugated  |
| Storage:              | Store at -20°C.<br>Avoid repeat freeze/thaw cycles.   |
| Stability:            | Stable for 12 months from date of receipt.  |
| Gene Name:            | ephrin A2   |
| Database Link:        | <a href="#">NP_001396</a><br><a href="#">Entrez Gene 13637 Mouse</a> <a href="#">Entrez Gene 1943 Human</a><br><a href="#">O43921</a> |
| Synonyms:             | ELF-1; EPLG6; HEK7-L; LERK-6; LERK6   |
| Matched ELISA Pair:   | TA700408  |
| Protein Families:     | Druggable Genome  |
| Protein Pathways:     | Axon guidance   |

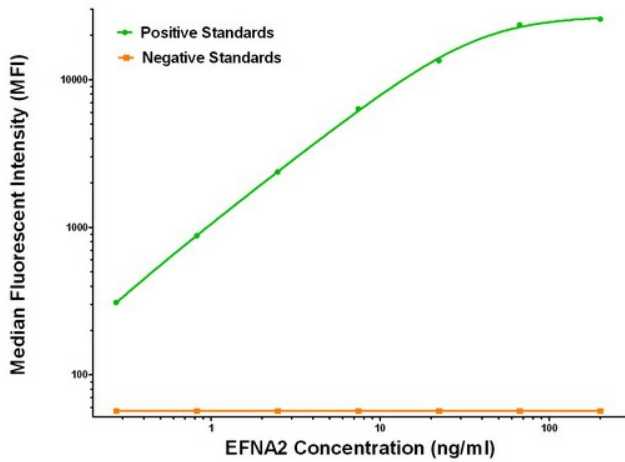


[View online »](#)

Product images:



EFNA2 ELISA with 1E12 Capture (TA600408) and 1C9 Detection ([TA700408]) Antibodies. Substrate used: Recombinant Human EFNA2 ([TP313728])



EFNA2 Luminex ELISA with 1E12 Capture (TA600408) and 1C9 Detection ([TA700408]) Antibodies. Substrate used: Recombinant Human EFNA2 ([TP313728])