

Product datasheet for **TA600406**

Cystatin SA (CST2) Mouse Monoclonal Capture Antibody [Clone ID: OTI2D6]

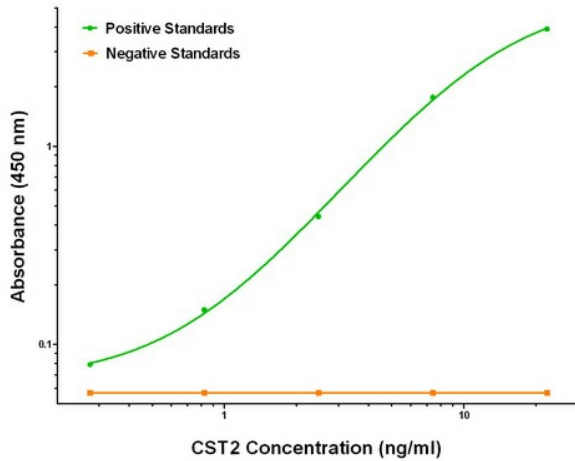
Product data:

Product Type:	Primary Antibodies
Clone Name:	OTI2D6
Applications:	ELISA
Recommended Dilution:	ELISA 1:100-1:1000
Reactivity:	Human
Host:	Mouse
Isotype:	IgG1
Clonality:	Monoclonal
Immunogen:	Full length human recombinant protein of human CST2 (NM_001322) produced in HEK293T cell.
Formulation:	Stored in PBS (pH 7.4) containing 0.05% sodium azide and up to 5% trehalose
Concentration:	0.5 mg/ml
Conjugation:	Unconjugated
Storage:	Store at -20°C. Avoid repeat freeze/thaw cycles.
Stability:	Stable for 12 months from date of receipt.
Gene Name:	cystatin SA
Database Link:	NP_001313 Entrez Gene 1470 Human P09228
Synonyms:	MGC71924
Matched ELISA Pair:	TA700050
Protein Families:	Secreted Protein

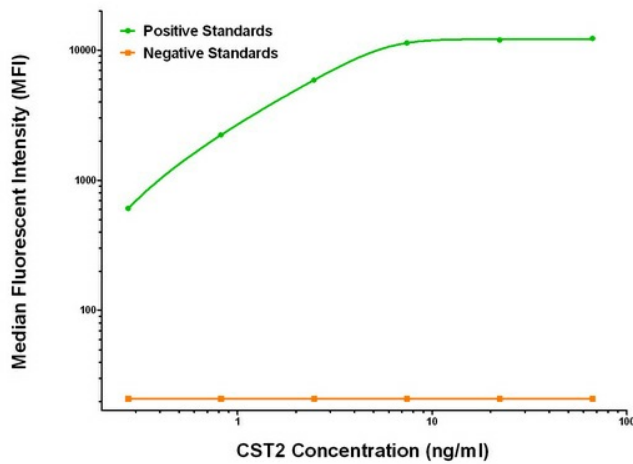


[View online »](#)

Product images:



CST2 ELISA with 2D6 Capture (TA600406) and Anti-Tag 1B12 Detection ([TA700050]) Antibodies. Substrate used: Recombinant Human CST2 ([TP309350])



CST2 Luminex ELISA with 2D6 Capture (TA600406) and Anti-Tag 1B12 Detection ([TA700050]) Antibodies. Substrate used: Recombinant Human CST2 ([TP309350])