

Product datasheet for **TA600405**

EPHX2 Capture Mouse Monoclonal Antibody [Clone ID: OTI2F2]

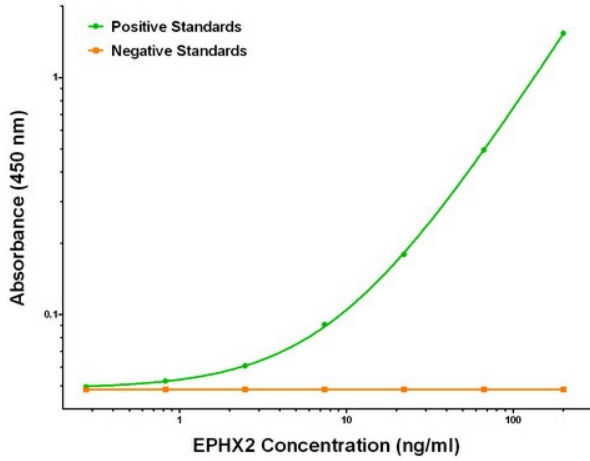
Product data:

Product Type:	Primary Antibodies
Clone Name:	OTI2F2
Applications:	ELISA, LMNX
Recommended Dilution:	1:100 - 1:1000
Reactivity:	Human
Host:	Mouse
Isotype:	IgG1
Clonality:	Monoclonal
Immunogen:	Full length human recombinant protein of human EPHX2 (NM_001979) produced in HEK293T cell.
Formulation:	Stored in PBS (pH 7.4) containing 0.05% sodium azide and up to 5% trehalose
Concentration:	0.5 mg/ml
Storage:	Store at -20°C as received.
Stability:	Stable for 12 months from date of receipt.
Gene Name:	epoxide hydrolase 2
Database Link:	NP_001970 Entrez Gene 2053 Human
Synonyms:	CEH; SEH
Matched ELISA Pair:	TA700403
Protein Pathways:	Arachidonic acid metabolism, Metabolic pathways

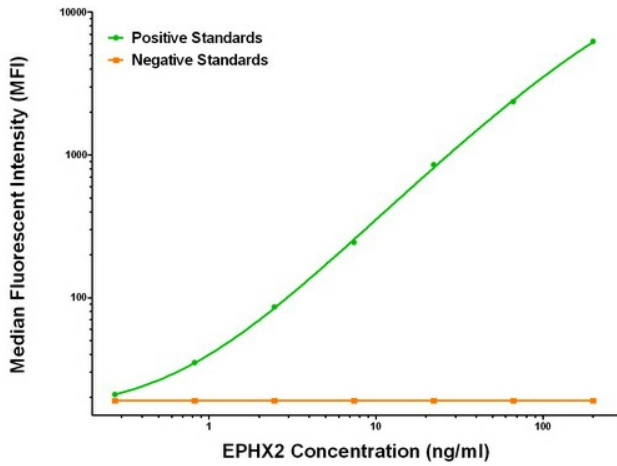


[View online »](#)

Product images:



EPHX2 ELISA with 2F2 Capture (TA600405) and 1H5 Detection ([TA700403]) Antibodies. Substrate used: Recombinant Human EPHX2 ([TP302489])



EPHX2 Luminex ELISA with 2F2 Capture (TA600405) and 1H5 Detection ([TA700403]) Antibodies. Substrate used: Recombinant Human EPHX2 ([TP302489])