

Product datasheet for **TA600400**

Haptoglobin (HP) Mouse Monoclonal Capture Antibody [Clone ID: OTI2B8]

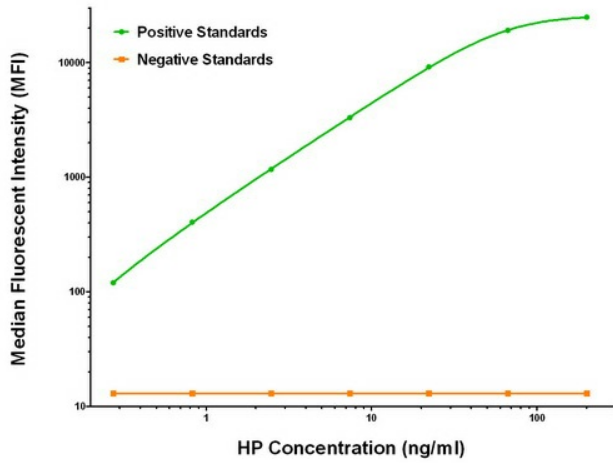
Product data:

Product Type:	Primary Antibodies
Clone Name:	OTI2B8
Applications:	ELISA
Recommended Dilution:	ELISA 1:100-1:1000
Reactivity:	Human
Host:	Mouse
Isotype:	IgG1
Clonality:	Monoclonal
Immunogen:	Full length human recombinant protein of human HP (NM_005143) produced in HEK293T cell.
Formulation:	Stored in PBS (pH 7.4) containing 0.05% sodium azide and up to 5% trehalose
Concentration:	0.5 mg/ml
Conjugation:	Unconjugated
Storage:	Store at -20°C. Avoid repeat freeze/thaw cycles.
Stability:	Stable for 12 months from date of receipt.
Gene Name:	haptoglobin
Database Link:	NP_005134 Entrez Gene 3240 Human P00738
Synonyms:	BP; HP2ALPHA2; HPA1S
Matched ELISA Pair:	TA700400, TA700401, TA700402
Protein Families:	Druggable Genome, Protease, Secreted Protein, Transmembrane

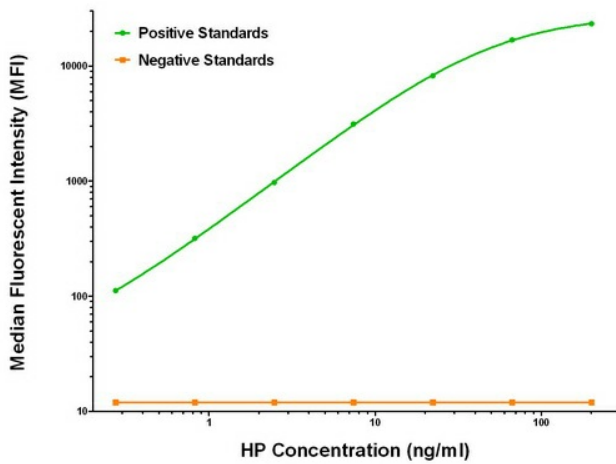


[View online »](#)

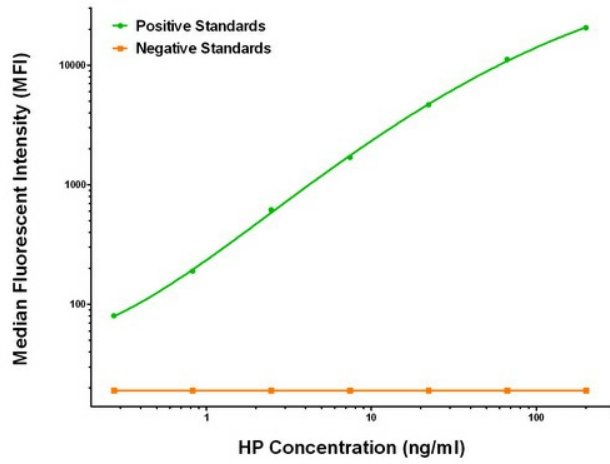
Product images:



HP Luminex ELISA with 2B8 Capture (TA600400) and 1F9 Detection ([TA700400]) Antibodies. Substrate used: Recombinant Human HP ([TP323612])



HP Luminex ELISA with 2B8 Capture (TA600400) and 4C2 Detection ([TA700401]) Antibodies. Substrate used: Recombinant Human HP ([TP323612])



HP Luminex ELISA with 2B8 Capture (TA600400) and 6H2 Detection ([TA700402]) Antibodies. Substrate used: Recombinant Human HP ([TP323612])