

Product datasheet for **TA600397**

ALDH1L1 Mouse Monoclonal Capture Antibody [Clone ID: OTI5G8]

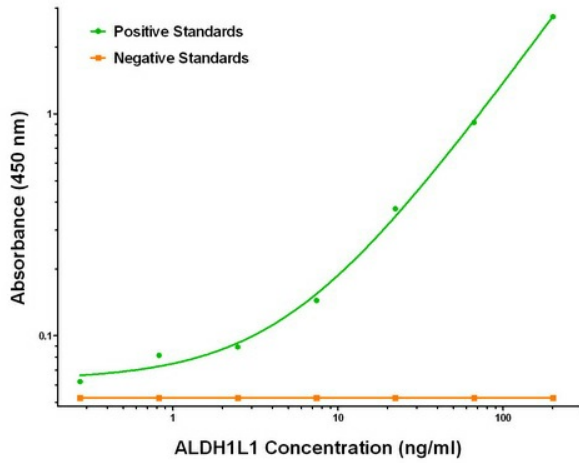
Product data:

Product Type:	Primary Antibodies
Clone Name:	OTI5G8
Applications:	ELISA
Recommended Dilution:	ELISA 1:100-1:1000
Reactivity:	Human, Mouse, Rat
Host:	Mouse
Isotype:	IgG1
Clonality:	Monoclonal
Immunogen:	Full length human recombinant protein of human ALDH1L1 (NM_012190) produced in HEK293T cell.
Formulation:	Stored in PBS (pH 7.4) containing 0.05% sodium azide and up to 5% trehalose
Concentration:	0.5 mg/ml
Conjugation:	Unconjugated
Storage:	Store at -20°C. Avoid repeat freeze/thaw cycles.
Stability:	Stable for 12 months from date of receipt.
Gene Name:	aldehyde dehydrogenase 1 family member L1
Database Link:	NP_036322 Entrez Gene 64392 Rat Entrez Gene 10840 Human O75891
Synonyms:	10-fTHF; 10-FTHFDH; FDH; FTHFD
Matched ELISA Pair:	TA700396, TA700397
Protein Families:	Druggable Genome
Protein Pathways:	One carbon pool by folate

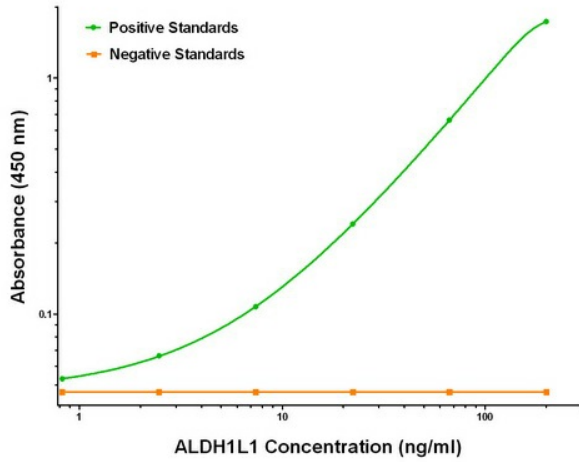


[View online »](#)

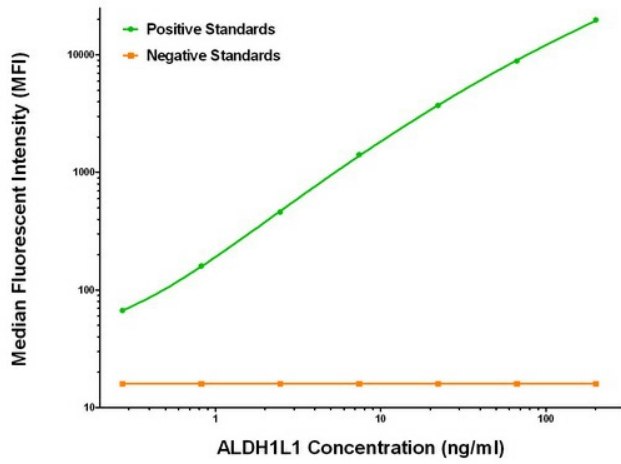
Product images:



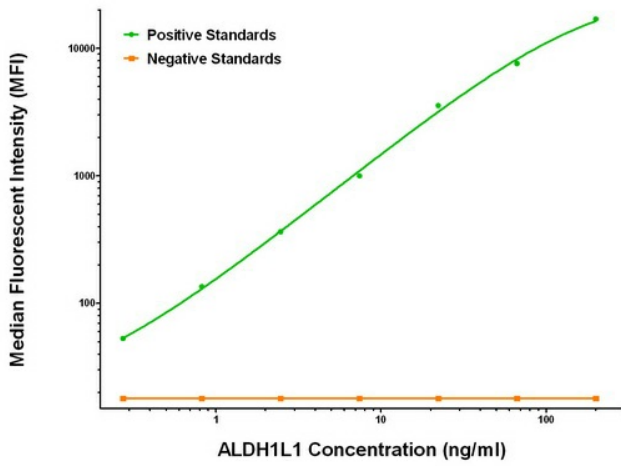
ALDH1L1 ELISA with 5G8 Capture (TA600397) and 1H6 Detection ([TA700396]) Antibodies. Substrate used: Recombinant Human ALDH1L1 ([TP313720])



ALDH1L1 ELISA with 5G8 Capture (TA600397) and 7G6 Detection ([TA700397]) Antibodies. Substrate used: Recombinant Human ALDH1L1 ([TP313720])



ALDH1L1 Luminex ELISA with 5G8 Capture (TA600397) and 1H6 Detection ([TA700396]) Antibodies. Substrate used: Recombinant Human ALDH1L1 ([TP313720])



ALDH1L1 Luminex ELISA with 5G8 Capture (TA600397) and 7G6 Detection ([TA700397]) Antibodies. Substrate used: Recombinant Human ALDH1L1 ([TP313720])