

## Product datasheet for **TA600396**

### ALDH1L1 Mouse Monoclonal Capture Antibody [Clone ID: OTI4C11]

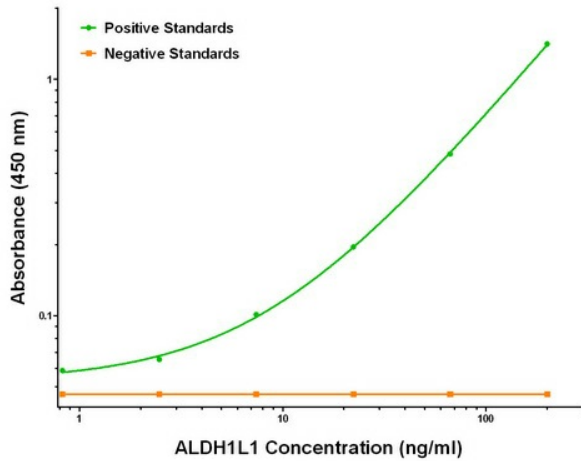
#### Product data:

Product Type:	Primary Antibodies
Clone Name:	OTI4C11
Applications:	ELISA
Recommended Dilution:	ELISA 1:100-1:1000
Reactivity:	Human, Mouse, Rat
Host:	Mouse
Isotype:	IgG1
Clonality:	Monoclonal
Immunogen:	Full length human recombinant protein of human ALDH1L1 (NM_012190) produced in HEK293T cell.
Formulation:	Stored in PBS (pH 7.4) containing 0.05% sodium azide and up to 5% trehalose
Concentration:	0.5 mg/ml
Conjugation:	Unconjugated
Storage:	Store at -20°C. Avoid repeat freeze/thaw cycles.
Stability:	Stable for 12 months from date of receipt.
Gene Name:	aldehyde dehydrogenase 1 family member L1
Database Link:	<a href="#">NP_036322</a> <a href="#">Entrez Gene 64392 Rat</a> <a href="#">Entrez Gene 10840 Human</a> <a href="#">O75891</a>
Synonyms:	10-fTHF; 10-FTHFDH; FDH; FTHFD
Matched ELISA Pair:	TA700396
Protein Families:	Druggable Genome
Protein Pathways:	One carbon pool by folate

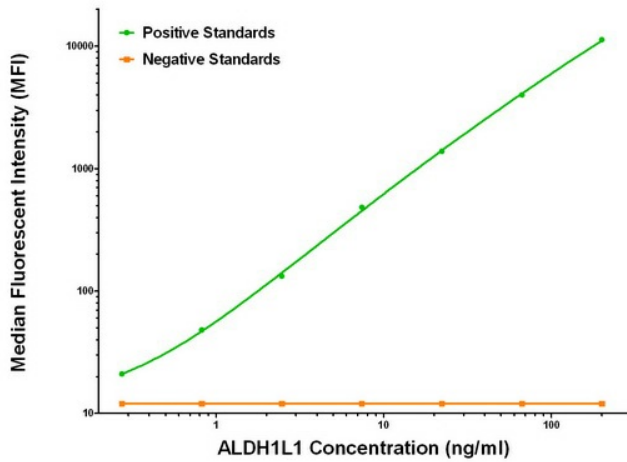


[View online »](#)

Product images:



ALDH1L1 ELISA with 4C11 Capture (TA600396) and 1H6 Detection ([TA700396]) Antibodies. Substrate used: Recombinant Human ALDH1L1 ([TP313720])



ALDH1L1 Luminex ELISA with 4C11 Capture (TA600396) and 1H6 Detection ([TA700396]) Antibodies. Substrate used: Recombinant Human ALDH1L1 ([TP313720])