

## Product datasheet for **TA600394**

### ALDH1L1 Mouse Monoclonal Capture Antibody [Clone ID: OTI1H6]

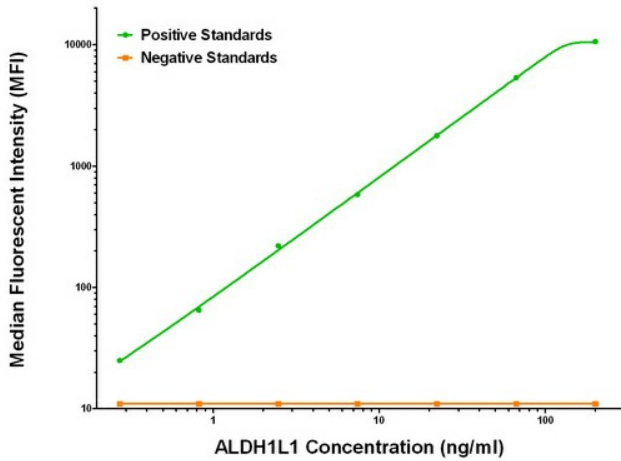
#### Product data:

|                       |  |
|-----------------------|--|
| Product Type:         | Primary Antibodies   |
| Clone Name:           | OTI1H6   |
| Applications:         | ELISA  |
| Recommended Dilution: | ELISA 1:100-1:1000   |
| Reactivity:           | Human, Mouse, Rat  |
| Host:                 | Mouse  |
| Isotype:              | IgG1   |
| Clonality:            | Monoclonal   |
| Immunogen:            | Full length human recombinant protein of human ALDH1L1 (NM_012190) produced in HEK293T cell.   |
| Formulation:          | Stored in PBS (pH 7.4) containing 0.05% sodium azide and up to 5% trehalose  |
| Concentration:        | 0.5 mg/ml  |
| Conjugation:          | Unconjugated   |
| Storage:              | Store at -20°C.<br>Avoid repeat freeze/thaw cycles.  |
| Stability:            | Stable for 12 months from date of receipt.   |
| Gene Name:            | aldehyde dehydrogenase 1 family member L1  |
| Database Link:        | <a href="#">NP_036322</a><br><a href="#">Entrez Gene 64392 Rat</a> <a href="#">Entrez Gene 10840 Human</a><br><a href="#">O75891</a> |
| Synonyms:             | 10-fTHF; 10-FTHFDH; FDH; FTHFD   |
| Matched ELISA Pair:   | TA700394, TA700395   |
| Protein Families:     | Druggable Genome   |
| Protein Pathways:     | One carbon pool by folate  |

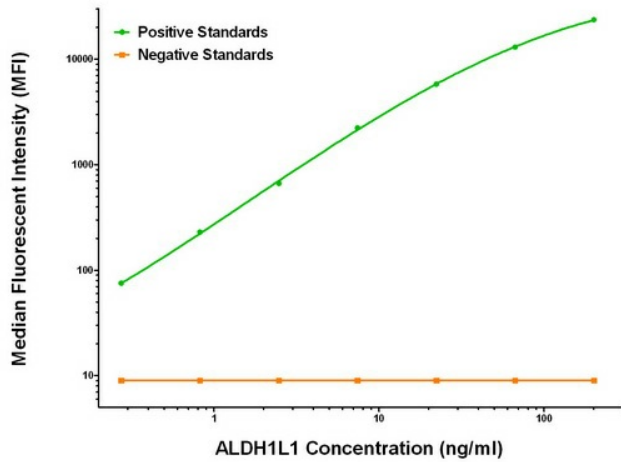


[View online »](#)

Product images:



ALDH1L1 Luminex ELISA with 1H6 Capture (TA600394) and 4C11 Detection ([TA700394]) Antibodies. Substrate used: Recombinant Human ALDH1L1 ([TP313720])



ALDH1L1 Luminex ELISA with 1H6 Capture (TA600394) and 5G8 Detection ([TA700395]) Antibodies. Substrate used: Recombinant Human ALDH1L1 ([TP313720])