

## Product datasheet for **TA600381**

### **p63 (TP63) Mouse Monoclonal Capture Antibody [Clone ID: OTI1F2]**

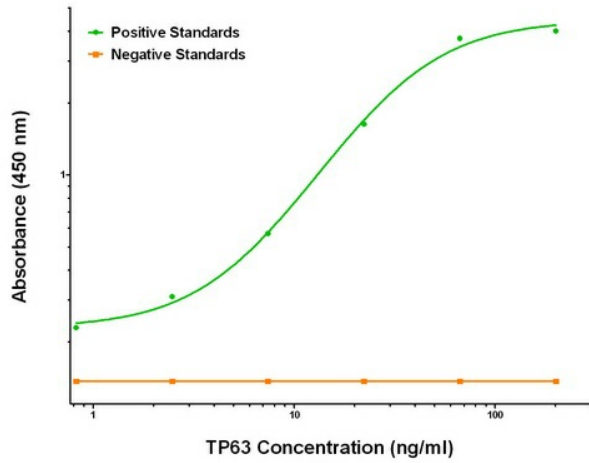
#### **Product data:**

Product Type:	Primary Antibodies
Clone Name:	OTI1F2
Applications:	ELISA, LMNX
Recommended Dilution:	1:100 - 1:1000
Reactivity:	Human, Mouse, Rat
Host:	Mouse
Isotype:	IgG1
Clonality:	Monoclonal
Immunogen:	Full length human recombinant protein of human TP63 (NM_003722) produced in HEK293T cell.
Formulation:	Stored in PBS (pH 7.4) containing 0.05% sodium azide and up to 5% trehalose
Concentration:	0.5 mg/ml
Purification:	Purified from mouse ascites fluids
Conjugation:	Unconjugated
Storage:	Store at -20°C. Avoid repeat freeze/thaw cycles.
Stability:	Stable for 12 months from date of receipt.
Gene Name:	tumor protein p63
Database Link:	<a href="#">NP_003713</a> <a href="#">Entrez Gene 246334 Rat</a> <a href="#">Entrez Gene 8626 Human</a> <a href="#">Q9H3D4</a>
Synonyms:	AIS; B(p51A); B(p51B); EEC3; KET; LMS; NBP; OFC8; p40; p51; p53CP; p63; p73H; p73L; RHS; SHFM4
Matched ELISA Pair:	TA700381
Protein Families:	Druggable Genome, Transcription Factors

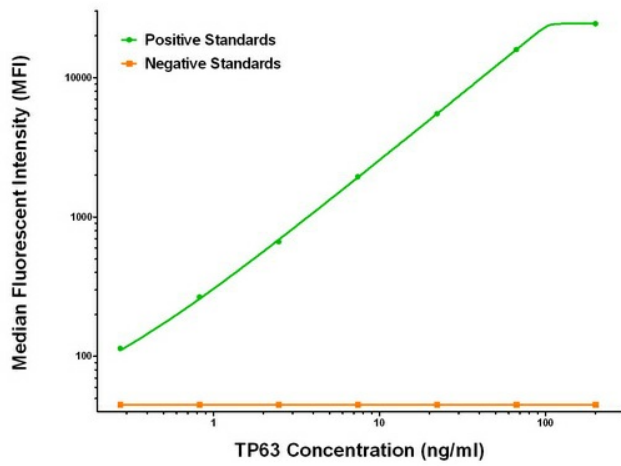


[View online »](#)

**Product images:**



TP63 ELISA with 1F2 Capture (TA600381) and 3D7 Detection ([TA700381]) Antibodies. Substrate used: Recombinant Human TP63 ([TP308013])



TP63 Luminex Elisa with 1F2 Capture (TA600381) and 3D7 Detection ([TA700381]) Antibodies. Substrate used: Recombinant Human TP63 ([TP308013])