

Product datasheet for **TA600380**

Calpain 9 (CAPN9) Mouse Monoclonal Capture Antibody [Clone ID: OTI3G10]

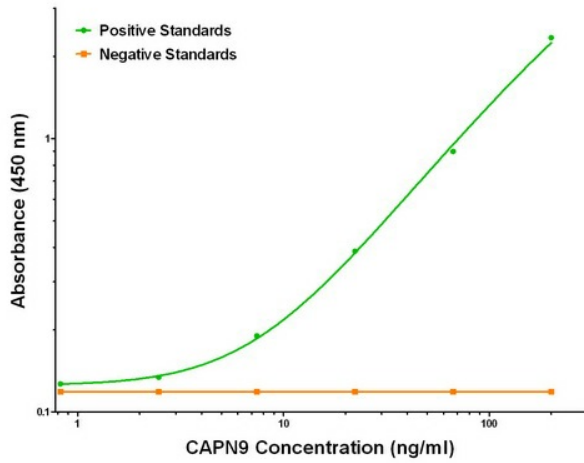
Product data:

Product Type:	Primary Antibodies
Clone Name:	OTI3G10
Applications:	ELISA, LMNX
Recommended Dilution:	1:100 - 1:1000
Reactivity:	Human, Mouse, Rat
Host:	Mouse
Isotype:	IgG1
Clonality:	Monoclonal
Immunogen:	Full length human recombinant protein of human CAPN9 (NM_006615) produced in HEK293T cell.
Formulation:	Stored in PBS (pH 7.4) containing 0.05% sodium azide and up to 5% trehalose
Concentration:	0.5 mg/ml
Conjugation:	Unconjugated
Storage:	Store at -20°C. Avoid repeat freeze/thaw cycles.
Stability:	Stable for 12 months from date of receipt.
Gene Name:	calpain 9
Database Link:	NP_006606 Entrez Gene 116694 Rat Entrez Gene 10753 Human O14815
Synonyms:	GC36; nCL-4
Matched ELISA Pair:	TA700378
Protein Families:	Druggable Genome, Protease

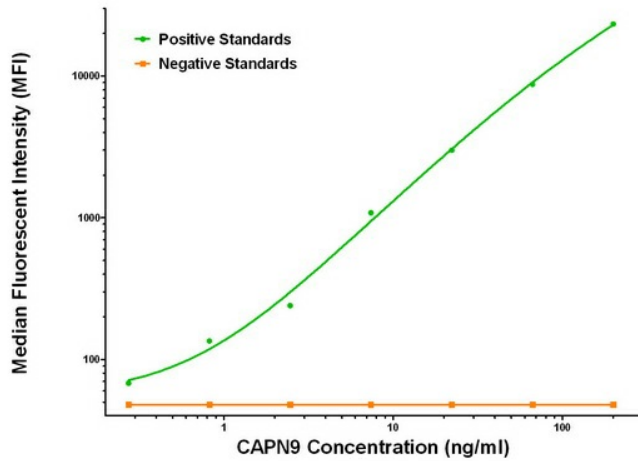


[View online »](#)

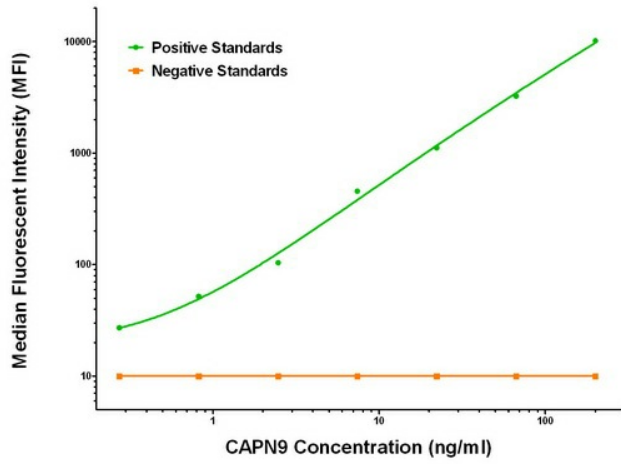
Product images:



CAPN9 ELISA with 3G10 Capture (TA600380) and 2G1 Detection ([TA700378]) Antibodies. Substrate used: Recombinant Human CAPN9 ([TP315171])



CAPN9 Luminex Elisa with 3G10 Capture (TA600380) and 1C2 Detection ([TA700379]) Antibodies. Substrate used: Recombinant Human CAPN9 ([TP315171])



CAPN9 Luminex Elisa with 3G10 Capture (TA600380) and 2G1 Detection ([TA700378]) Antibodies. Substrate used: Recombinant Human CAPN9 ([TP315171])