

Product datasheet for **TA600371**

CD33 Mouse Monoclonal Capture Antibody [Clone ID: OTI1B10]

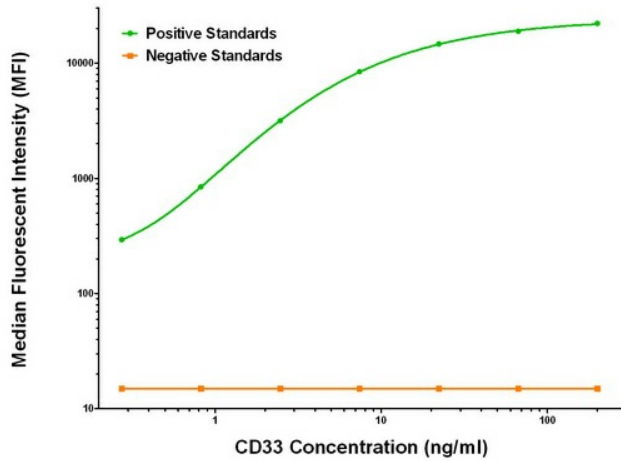
Product data:

Product Type:	Primary Antibodies
Clone Name:	OTI1B10
Applications:	LMNX
Recommended Dilution:	1:100 - 1:1000
Reactivity:	Human
Host:	Mouse
Isotype:	IgG1
Clonality:	Monoclonal
Immunogen:	Full length human recombinant protein of human CD33 (NM_001772) produced in HEK293T cell.
Formulation:	Stored in PBS (pH 7.4) containing 0.05% sodium azide and up to 5% trehalose
Concentration:	0.5 mg/ml
Conjugation:	Unconjugated
Storage:	Store at -20°C. Avoid repeat freeze/thaw cycles.
Stability:	Stable for 12 months from date of receipt.
Gene Name:	CD33 molecule
Database Link:	NP_001763 Entrez Gene 945 Human P20138
Synonyms:	p67; SIGLEC-3; SIGLEC3
Matched ELISA Pair:	TA700371
Protein Families:	Druggable Genome, Transmembrane
Protein Pathways:	Hematopoietic cell lineage



[View online »](#)

Product images:



CD33 Luminex Elisa with 1B10 Capture (TA600371) and 2E4 Detection ([TA700371]) Antibodies. Substrate used: Recombinant Human CD33 ([TP307023])