

## Product datasheet for **TA600359**

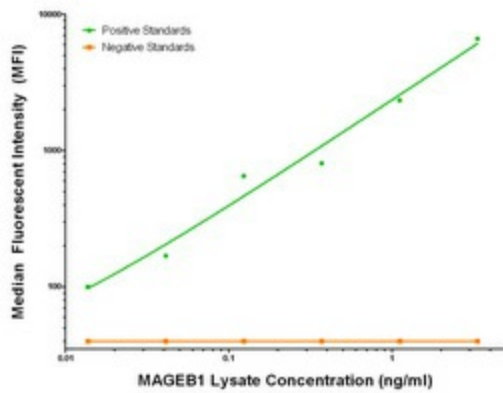
### **MAGEB1 Mouse Monoclonal Capture Antibody [Clone ID: OTI5C12]**

#### **Product data:**

Product Type:	Primary Antibodies
Clone Name:	OTI5C12
Applications:	ELISA
Recommended Dilution:	ELISA 1:100-1:1000
Reactivity:	Human
Host:	Mouse
Isotype:	IgG1
Clonality:	Monoclonal
Immunogen:	Full length human recombinant protein of human MAGEB1 (NM_002363) produced in HEK293T cell.
Formulation:	Stored in PBS (pH 7.4) containing 0.05% sodium azide and up to 5% trehalose
Concentration:	0.5 mg/ml
Conjugation:	Unconjugated
Storage:	Store at -20°C. Avoid repeat freeze/thaw cycles.
Stability:	Stable for 12 months from date of receipt.
Gene Name:	MAGE family member B1
Database Link:	<a href="#">NP_002354</a> <a href="#">Entrez Gene 4112 Human P43366</a>
Synonyms:	CT3.1; DAM10; MAGE-Xp; MAGEL1
Matched ELISA Pair:	TA700358



[View online »](#)

**Product images:**

MAGEB1 Luminex Elisa with 5C12 Capture (TA600359) and 6H6 Detection ([TA700358]) Antibodies. Substrate used: Recombinant Human MAGEB1 ([LY419376])