

Product datasheet for **TA600355**

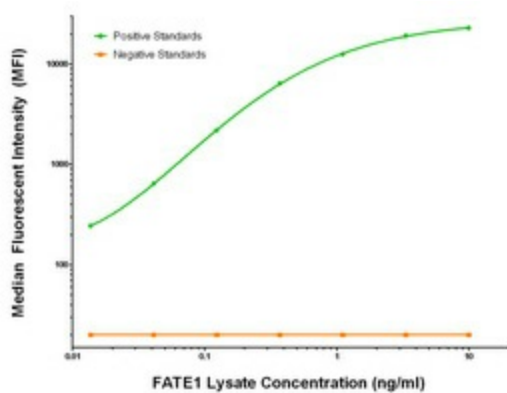
FATE1 Mouse Monoclonal Capture Antibody [Clone ID: OTI7B12]

Product data:

Product Type:	Primary Antibodies
Clone Name:	OTI7B12
Applications:	ELISA
Recommended Dilution:	ELISA 1:100-1:1000
Reactivity:	Human
Host:	Mouse
Isotype:	IgG1
Clonality:	Monoclonal
Immunogen:	Full length human recombinant protein of human FATE1 (NM_033085) produced in HEK293T cell.
Formulation:	Stored in PBS (pH 7.4) containing 0.05% sodium azide and up to 5% trehalose
Concentration:	0.5 mg/ml
Conjugation:	Unconjugated
Storage:	Store at -20°C. Avoid repeat freeze/thaw cycles.
Stability:	Stable for 12 months from date of receipt.
Gene Name:	fetal and adult testis expressed 1
Database Link:	NP_149076 Entrez Gene 89885 Human Q969F0
Synonyms:	CT43; FATE
Matched ELISA Pair:	TA700352
Protein Families:	Transmembrane



[View online »](#)

Product images:

FATE1 Luminex Elisa with 7B12 Capture (TA600355) and 7B5 Detection ([TA700352]) Antibodies. Substrate used: Recombinant Human FATE1 ([LY409735])