

Product datasheet for **TA600352**

FATE1 Mouse Monoclonal Capture Antibody [Clone ID: OTI6F10]

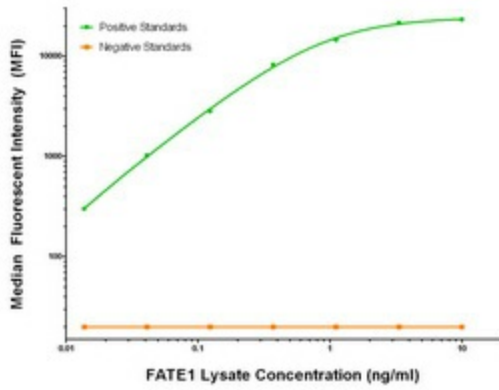
Product data:

| | |
|-----------------------|--|
| Product Type: | Primary Antibodies |
| Clone Name: | OTI6F10 |
| Applications: | ELISA |
| Recommended Dilution: | ELISA 1:100-1:1000 |
| Reactivity: | Human |
| Host: | Mouse |
| Isotype: | IgG1 |
| Clonality: | Monoclonal |
| Immunogen: | Full length human recombinant protein of human FATE1 (NM_033085) produced in HEK293T cell. |
| Formulation: | Stored in PBS (pH 7.4) containing 0.05% sodium azide and up to 5% trehalose |
| Concentration: | 0.5 mg/ml |
| Conjugation: | Unconjugated |
| Storage: | Store at -20°C. Avoid repeat freeze/thaw cycles. |
| Stability: | Stable for 12 months from date of receipt. |
| Gene Name: | fetal and adult testis expressed 1 |
| Database Link: | NP_149076 Entrez Gene 89885 Human Q969F0 |
| Synonyms: | CT43; FATE |
| Matched ELISA Pair: | TA700352 |
| Protein Families: | Transmembrane |



[View online »](#)

Product images:



FATE1 Luminex Elisa with 6F10 Capture (TA600352) and 7B5 Detection ([TA700352]) Antibodies. Substrate used: Recombinant Human FATE1 ([LY409735])