

## Product datasheet for **TA600348**

### Parvin alpha (PARVA) Mouse Monoclonal Capture Antibody [Clone ID: OTI3G9]

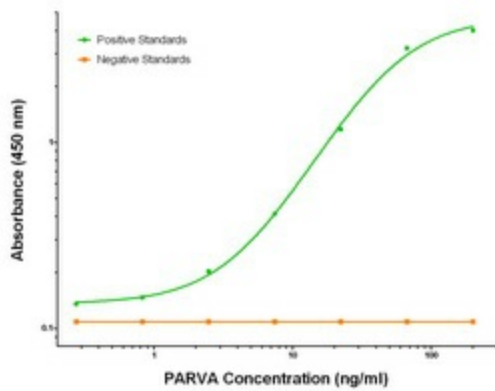
#### Product data:

Product Type:	Primary Antibodies
Clone Name:	OTI3G9
Applications:	ELISA
Recommended Dilution:	ELISA 1:100-1:1000
Reactivity:	Human, Mouse, Rat
Host:	Mouse
Isotype:	IgG1
Clonality:	Monoclonal
Immunogen:	Full length human recombinant protein of human PARVA (NM_018222) produced in HEK293T cell.
Formulation:	Stored in PBS (pH 7.4) containing 0.05% sodium azide and up to 5% trehalose
Concentration:	0.5 mg/ml
Conjugation:	Unconjugated
Storage:	Store at -20°C. Avoid repeat freeze/thaw cycles.
Stability:	Stable for 12 months from date of receipt.
Gene Name:	parvin alpha
Database Link:	<a href="#">NP_060692</a> <a href="#">Entrez Gene 57341 Rat</a> <a href="#">Entrez Gene 57342 Mouse</a> <a href="#">Entrez Gene 55742 Human</a> <a href="#">Q9NVD7</a>
Synonyms:	CH-ILKBP; MXRA2
Matched ELISA Pair:	TA700343
Protein Pathways:	Focal adhesion

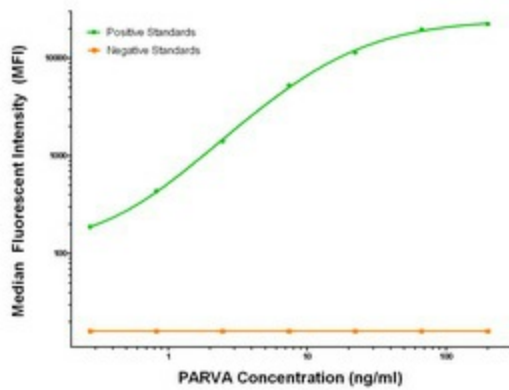


[View online »](#)

Product images:



PARVA Elisa with 3G9 Capture (TA600348) and 3H2 Detection ([TA700343]) Antibodies. Substrate used: Recombinant Human PARVA ([TP305086])



PARVA Luminex Elisa with 3G9 Capture (TA600348) and 3H2 Detection ([TA700343]) Antibodies. Substrate used: Recombinant Human PARVA ([TP305086])