

## Product datasheet for **TA600341**

### MEK1 (MAP2K1) Mouse Monoclonal Capture Antibody [Clone ID: OTI1A10]

#### Product data:

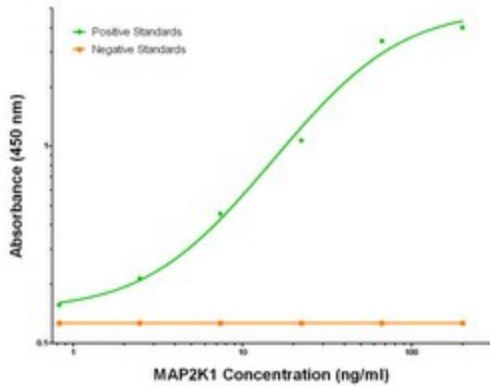
Product Type:	Primary Antibodies
Clone Name:	OTI1A10
Applications:	ELISA
Recommended Dilution:	ELISA 1:100-1:1000
Reactivity:	Human, Mouse, Rat
Host:	Mouse
Isotype:	IgG1
Clonality:	Monoclonal
Immunogen:	Full length human recombinant protein of human MAP2K1 (NM_002755) produced in HEK293T cell.
Formulation:	Stored in PBS (pH 7.4) containing 0.05% sodium azide and up to 5% trehalose
Concentration:	0.5 mg/ml
Conjugation:	Unconjugated
Storage:	Store at -20°C. Avoid repeat freeze/thaw cycles.
Stability:	Stable for 12 months from date of receipt.
Gene Name:	mitogen-activated protein kinase kinase 1
Database Link:	<a href="#">NP_002746</a> <a href="#">Entrez Gene 26395 Mouse</a> <a href="#">Entrez Gene 170851 Rat</a> <a href="#">Entrez Gene 5604 Human</a> <a href="#">Q02750</a>
Synonyms:	CFC3; MAPKK1; MEK1; MKK1; PRKMK1
Matched ELISA Pair:	TA700335
Protein Families:	Druggable Genome, Protein Kinase



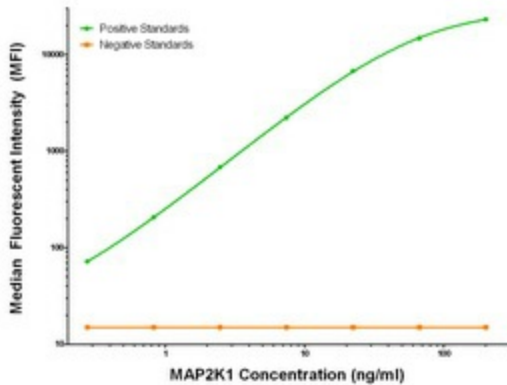
[View online »](#)

**Protein Pathways:**

Acute myeloid leukemia, B cell receptor signaling pathway, Bladder cancer, Chemokine signaling pathway, Chronic myeloid leukemia, Colorectal cancer, Dorso-ventral axis formation, Endometrial cancer, ErbB signaling pathway, Fc epsilon RI signaling pathway, Fc gamma R-mediated phagocytosis, Focal adhesion, Gap junction, Glioma, GnRH signaling pathway, Insulin signaling pathway, Long-term depression, Long-term potentiation, MAPK signaling pathway, Melanogenesis, Melanoma, Natural killer cell mediated cytotoxicity, Neurotrophin signaling pathway, Non-small cell lung cancer, Oocyte meiosis, Pancreatic cancer, Pathways in cancer, Prion diseases, Progesterone-mediated oocyte maturation, Prostate cancer, Regulation of actin cytoskeleton, Renal cell carcinoma, T cell receptor signaling pathway, Thyroid cancer, Toll-like receptor signaling pathway, Vascular smooth muscle contraction, VEGF signaling pathway

**Product images:**


MAP2K1 Elisa with 1A10 Capture (TA600341) and 2B2 Detection ([TA700335]) Antibodies. Substrate used: Recombinant Human MAP2K1 ([TP318460])



MAP2K1 Luminex Elisa with 1A10 Capture (TA600341) and 2B2 Detection ([TA700335]) Antibodies. Substrate used: Recombinant Human MAP2K1 ([TP318460])