

## Product datasheet for **TA600333**

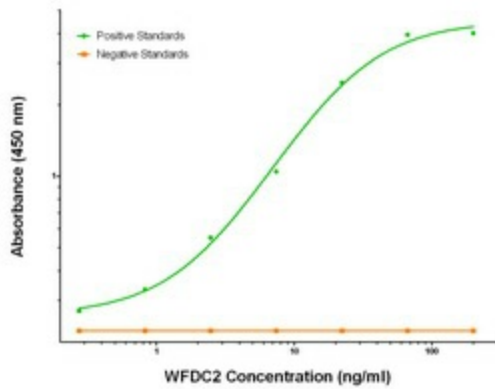
### HE4 (WFDC2) Mouse Monoclonal Capture Antibody [Clone ID: OTI1G7]

#### Product data:

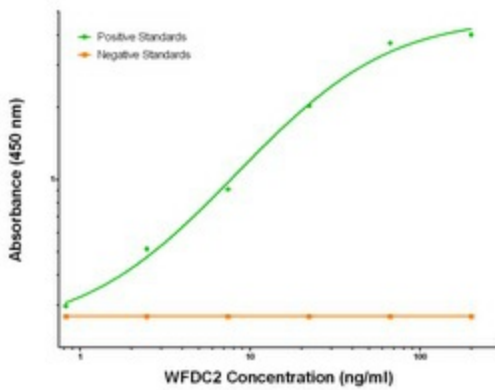
Product Type:	Primary Antibodies
Clone Name:	OTI1G7
Applications:	ELISA
Recommended Dilution:	ELISA 1:100-1:1000
Reactivity:	Human
Host:	Mouse
Isotype:	IgG1
Clonality:	Monoclonal
Immunogen:	Full length human recombinant protein of human WFDC2 (HE4) (NM_006103) produced in HEK293T cell.
Formulation:	Stored in PBS (pH 7.4) containing 0.05% sodium azide and up to 5% trehalose
Concentration:	0.5 mg/ml
Conjugation:	Unconjugated
Storage:	Store at -20°C. Avoid repeat freeze/thaw cycles.
Stability:	Stable for 12 months from date of receipt.
Gene Name:	WAP four-disulfide core domain 2
Database Link:	<a href="#">NP_006094</a> <a href="#">Entrez Gene 10406 Human</a> <a href="#">Q14508</a>
Synonyms:	dJ461P17.6; EDDM4; HE4; WAP5
Matched ELISA Pair:	TA700329
Protein Families:	Secreted Protein, Transmembrane



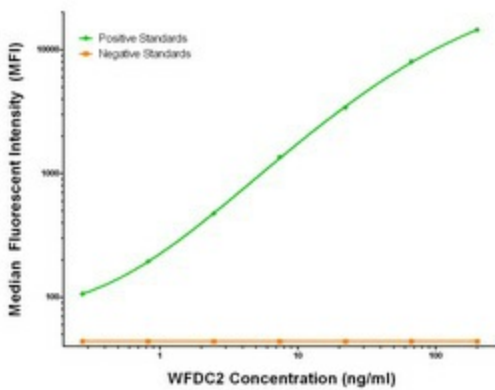
[View online »](#)

**Product images:**


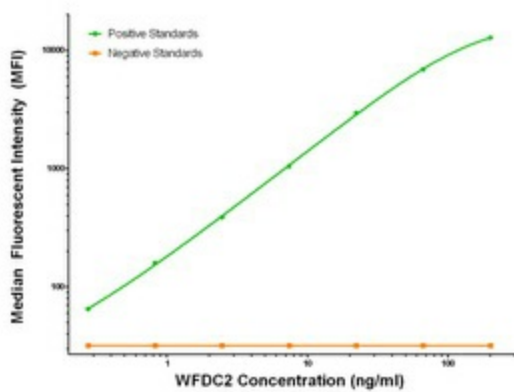
WFDC2 (HE4) Elisa with 1G7 Capture (TA600333) and 1B9 Detection ([TA700329]) Antibodies. Substrate used: Recombinant Human WFDC2 ([TP308491])



WFDC2 (HE4) Elisa with 1G7 Capture (TA600333) and 2A7 Detection ([TA700330]) Antibodies. Substrate used: Recombinant Human WFDC2 ([TP308491])



WFDC2 (HE4) Luminex Elisa with 1G7 Capture (TA600333) and 1B9 Detection ([TA700329]) Antibodies. Substrate used: Recombinant Human WFDC2 ([TP308491])



WFDC2 (HE4) Luminex Elisa with 1G7 Capture (TA600333) and 2A7 Detection ([TA700330]) Antibodies. Substrate used: Recombinant Human WFDC2 ([TP308491])