

Product datasheet for **TA600331**

HE4 (WFDC2) Mouse Monoclonal Capture Antibody [Clone ID: OTI2A7]

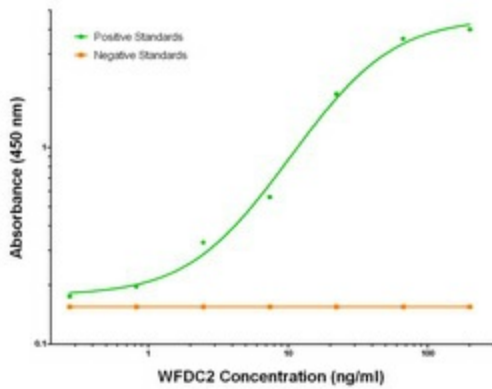
Product data:

| | |
|-----------------------|--|
| Product Type: | Primary Antibodies |
| Clone Name: | OTI2A7 |
| Applications: | ELISA |
| Recommended Dilution: | ELISA 1:100-1:1000 |
| Reactivity: | Human |
| Host: | Mouse |
| Isotype: | IgG1 |
| Clonality: | Monoclonal |
| Immunogen: | Full length human recombinant protein of human WFDC2 (HE4) (NM_006103) produced in HEK293T cell. |
| Formulation: | Stored in PBS (pH 7.4) containing 0.05% sodium azide and up to 5% trehalose |
| Concentration: | 0.5 mg/ml |
| Conjugation: | Unconjugated |
| Storage: | Store at -20°C. Avoid repeat freeze/thaw cycles. |
| Stability: | Stable for 12 months from date of receipt. |
| Gene Name: | WAP four-disulfide core domain 2 |
| Database Link: | NP_006094 Entrez Gene 10406 Human Q14508 |
| Synonyms: | dJ461P17.6; EDDM4; HE4; WAP5 |
| Matched ELISA Pair: | TA700331 |
| Protein Families: | Secreted Protein, Transmembrane |

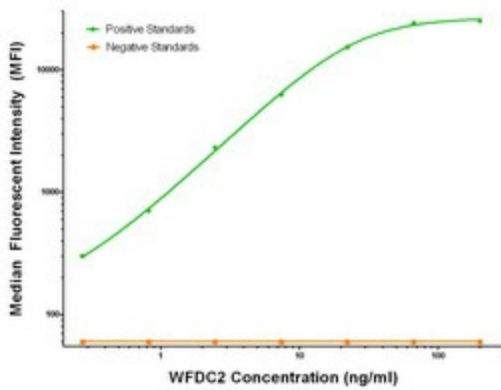


[View online »](#)

Product images:



WFDC2 (HE4) Elisa with 2A7 Capture (TA600331) and 1E12 Detection ([TA700331]) Antibodies. Substrate used: Recombinant Human WFDC2 ([TP308491])



WFDC2 (HE4) Luminex Elisa with 2A7 Capture (TA600331) and 1E12 Detection ([TA700331]) Antibodies. Substrate used: Recombinant Human WFDC2 ([TP308491])