

Product datasheet for **TA600324**

Cytokeratin 20 (KRT20) Mouse Monoclonal Capture Antibody [Clone ID: OTI4A2]

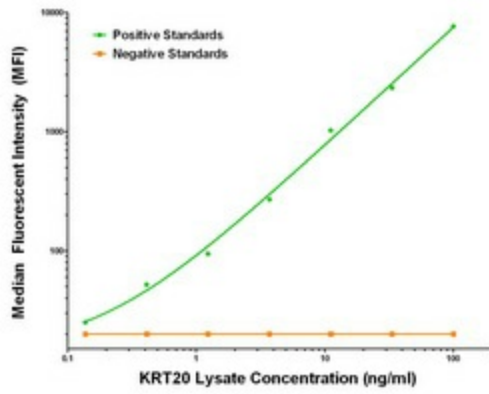
Product data:

| | |
|-----------------------|--------------------------------------------------------------------------------------------|
| Product Type: | Primary Antibodies |
| Clone Name: | OTI4A2 |
| Applications: | LMNX |
| Recommended Dilution: | 1:100 - 1:1000 |
| Reactivity: | Human |
| Host: | Mouse |
| Isotype: | IgG1 |
| Clonality: | Monoclonal |
| Immunogen: | Full length human recombinant protein of human KRT20 (NM_019010) produced in HEK293T cell. |
| Formulation: | Stored in PBS (pH 7.4) containing 0.05% sodium azide and up to 5% trehalose |
| Concentration: | 0.5 mg/ml |
| Conjugation: | Unconjugated |
| Storage: | Store at -20°C. Avoid repeat freeze/thaw cycles. |
| Stability: | Stable for 12 months from date of receipt. |
| Gene Name: | keratin 20 |
| Database Link: | NP_061883 Entrez Gene 54474 Human P35900 |
| Synonyms: | CD20; CK-20; CK20; K20; KRT21 |
| Matched ELISA Pair: | TA700050 |



[View online »](#)

Product images:



KRT20 Luminex Elisa with 4A2 Capture (TA600324) and Anti-Tag 1B12 Detection ([TA700050]) Antibodies. Substrate used: Recombinant Human KRT20 ([LY402725])