

Product datasheet for **TA600320**

Dystrobrevin alpha (DTNA) Mouse Monoclonal Capture Antibody [Clone ID: OTI1B11]

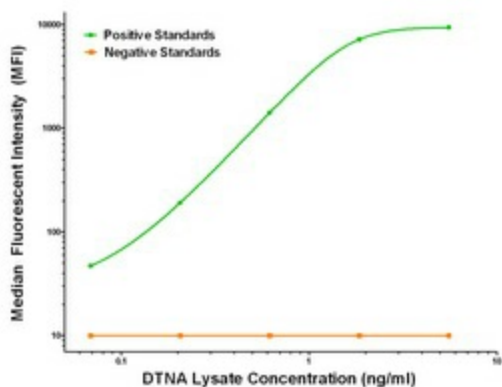
Product data:

Product Type:	Primary Antibodies
Clone Name:	OTI1B11
Applications:	LMNX
Recommended Dilution:	1:100 - 1:1000
Reactivity:	Human, Mouse, Rat
Host:	Mouse
Isotype:	IgG1
Clonality:	Monoclonal
Immunogen:	Full length human recombinant protein of human DTNA (NM_032980) produced in HEK293T cell.
Formulation:	Stored in PBS (pH 7.4) containing 0.05% sodium azide and up to 5% trehalose
Concentration:	0.5 mg/ml
Conjugation:	Unconjugated
Storage:	Store at -20°C. Avoid repeat freeze/thaw cycles.
Stability:	Stable for 12 months from date of receipt.
Gene Name:	dystrobrevin alpha
Database Link:	NP_116762 Entrez Gene 1837 Human Q9Y4J8
Synonyms:	D18S892E; DRP3; DTN; DTN-A; LVNC1
Matched ELISA Pair:	TA700319
Protein Families:	Druggable Genome



[View online »](#)

Product images:



DTNA Luminex Elisa with 1B11 Capture (TA600320) and 1A2 Detection ([TA700319]) Antibodies. Substrate used: Recombinant Human DTNA ([LY409818])